

# The Woodwork Dust Control Co Ltd

A Complete Wood Waste Extraction Service to all Timber Industries



WORKSHOP HEATERS



BRIQUETTING PRESSES



ROTARY VALVE FILTERS



HOPPER FILTER JH/3/2130/WP



DUCTWORK INSTALLATION



MULTIFILTER MF/1/60/CS



BAGGING UNIT B/5/1775/WP + 30kW FAN



CHAINFILTER CH/6/4260/WP FEEDING BIOMASS HEATER

The Woodwork Dust Control Company Ltd is a progressive company enjoying considerable success through being able to offer a large and comprehensive range of dust extraction equipment at most competitive prices.

We supply dust extraction systems from small mobile single filter extractors to substantial external bagging and hopper units servicing large woodworking facilities. Systems can be designed for a variety of waste matter including general softwood waste as well as finer materials such as MDF, hardwood and sanding dust.

We offer a complete service from initial site survey, through the system design, quotation and manufacture stages to installation and commissioning. We also maintain dust extraction equipment and carry out surveys and tests to confirm compliance with COSHH, ATEX and DSEAR regulations. Since the company was formed in 1989, we have successfully installed over 1000 complete systems at schools, prisons, universities, hospitals and other institutions as well as the more obvious joinery works, sawmills, furniture manufacturers and panel processing plants.

We supply a full range of component parts and ancillaries such as dust collection bags, filters, flexible hose, metal ductwork components, fans, downdraught benches and dry filter spray booths.

Just give us a call and we'll be pleased to discuss your dust extraction requirements.

**The Woodwork Dust Control Co Ltd, Rushbeds Ind Estate, Wotton Road, Brill, Bucks, HP18 9UB**

**Tel : 01844 238833**

**Fax : 01844 238899**

**e-mail : [enquiries@woodworkdustcontrol.co.uk](mailto:enquiries@woodworkdustcontrol.co.uk)**

**[www.woodworkdustcontrol.co.uk](http://www.woodworkdustcontrol.co.uk)**

# The Woodwork Dust Control Co Ltd

Rushbeds Industrial Estate, Wotton Road, Brill, Bucks, HP18 9UB.  
Tel: 01844 238833 Email: enquiries@woodworkdustcontrol.co.uk  
Fax: 01844 238899 Web: www.woodworkdustcontrol.co.uk

## *A Complete Wood Waste Extraction Service to All Timber Industries*

This catalogue details our full range of products which includes all items commonly found in dust extraction systems. If you require help to decide what you need, our staff will be pleased to assist by telephone, fax or site visit if required.

For account holders, orders may be placed verbally, by fax, e-mail or post. For non-account holders, we normally ask for payment against a pro-forma invoice.

Many products are available ex stock. Others such as machine hoods are tailor-made in our manufacturing facility with short turnaround times.

Virtually all items are priced with VAT to be added to UK sales. All prices are ex works and we offer an excellent carrier service to the UK mainland. Consignments for next day delivery costs £16.50 and for a Larger consignments such as complete units or bespoke systems can be delivered by our fleet of vans.

In common with many industries, we are compelled to use a mixture of SI and imperial units. Generally, ductwork is supplied in standard metric units (100 – 120 – 150mm dia etc) while flexible hose is supplied in imperial diameters (3" – 4" – 5" dia etc). This is consistent with most woodworking machine suppliers. Throughout the catalogue, conversion between SI and imperial units may be made as follows: 1HP = 0.76kW

1 cfm = 1.7 cmh  
1"swg = 249 Pa

All of our ductwork is of the lipped variety where each component has a turned 6mm flange at each end. Flanges of adjacent components are held together by a tension clip of U section which grips the two lips together. A major benefit of this variety is its ease of installation and the simplicity of future changes, additions or re-location.

All our units are fitted with filters manufactured from terylene needlefelt of 350 g/m<sup>2</sup>. This is a general woodworking grade combining longevity with excellent filtration and minimal pressure drop. Specialist filter media such as anti-static and epitropic are available for non-standard applications. We can supply tailor-made filters working to supplied dimensions, a sample or for known units manufactured by other companies.

Where required by the latest ATEX regulations, our units are fitted with explosion relief panels of statutory area. For systems that we have designed and installed we will guarantee compliance with COSHH, ATEX, DSEAR and all other current relevant legislation.

With noise increasingly becoming an issue we attempt to design and manufacture our units with acoustic sympathy. Noise levels vary according to many installation and local factors but we generally find our installed systems result in noise levels around 80 – 85 dB. This can be reduced by the fitting of in-line silencers and the use of acoustic screening and booths.

Our products are warranted against design, manufacturing or material defect for 12 months from sale or installation. We also give sympathetic consideration to defects after this period although such cases are rare. A condition of warranty is that all electrical equipment must be site-wired by an approved NICEIC electrical contractor and we will require a copy of the installation certificate confirming full load current and overload settings.

## SUMMARY OF SERVICES

We provide a complete dust extraction service to the woodworking industry. This includes the following services:

Supply of components: We can supply all components that go to make up an extraction system including ductwork, flexible hose, filters, impellers, motors, hoods etc.

Supply of units: We supply filter units and fans as separate units for use with existing ductwork systems or those installed by others.

Supply of bespoke items: We can design and manufacture bespoke items using our CAD drawing and CAM manufacturing facilities.

Installation of complete systems: We will design, manufacture and install complete bespoke systems usually following a site visit and the provision of a quote with proposal drawing.

System upgrades: Companies often increase demand beyond the capacity of their existing extraction system. In such cases we can offer advice on upgrading systems by the use of additional fans and filter units.

Provision of additional ductwork: We can supply, with or without an installation service, ductwork to be added to an existing system to accommodate a new or re-located woodworking machine.

Service and COSHH testing: Like most engineering products, extraction plant benefits from regular preventative maintenance and reduced downtime. We carry out such service work and normally conduct an air test to confirm compliance with the COSHH regulations. We offer this service both for our own systems and those installed by other companies.

Breakdown Service: We appreciate that extraction breakdowns can bring production to a halt which can be very costly. In these circumstances we do our utmost to provide urgent assistance.

Relocation Service: It often becomes necessary to move extraction systems either within a site or to a new location. We are pleased to quote for such work, whether or not the system is of our original supply.

Technical Advice: We are pleased to offer advice without obligation on all aspects of dust extraction.

System Design: We offer a system design service using CAD systems and can exchange data files and digital photos by e-mail or disc.

## DUST EXTRACTION OVERVIEW

There are several factors to take into account when specifying dust extraction plant and some of the most important are:

Air Volume: This will depend on the number and type of woodworking machines to be serviced and how many machines will be in concurrent use. Many woodworking machine suppliers specify an air requirement for efficient dust extraction. Otherwise we can calculate the air requirement from the extraction outlet diameter(s). Air volume is normally expressed as either cubic feet per minute (cfm) or cubic metres per hour (cmh).

Filter area: Following on from the air volume factor, the filter area must be calculated such that the waste can be separated from the air without blocking the filters.

Materials handled: The machining of materials like MDF and hardwood results in finer waste than softwoods. These generally require a multi-filter type unit with a large filter area and automatic filter cleaning.

Waste disposal: Waste is usually collected in one or more polythene bags or, generally with larger systems, discharged into a skip. Alternatively waste may be transferred by a sub-system into a container or a burner via a silo.

Location: Space or other local constraints may dictate an internal or external location.

Noise: Unwanted noise, both for staff and neighbours, has increasingly become a factor in the selection of plant and its location.

We would be pleased to discuss how these factors affect your particular circumstances. We can help either by telephone or a site visit. Summarised below are our main categories of filter plant:

### WV RANGE

These small drum type units operate at relatively low air volumes but a high static pressure. Such characteristics are ideally suited to small bandsaws or hand tools such as sanders and routers with a small bore extraction outlet (80mm or less)

### WOODWORK RANGE

This is our most economical range suitable for larger waste particles and chippings although they may optionally be fitted with SMART filters to handle MDF and hardwoods. In common with other manufacturers, these units operate at a relatively high filter speed to produce a competitively priced product. One or more filters are fitted above the unit body with a polythene collection bag below. The suction fan is an integral part of the unit body. This range of unit is designed for internal use although they may be located externally if suitably weatherproofed.

### MF (MULTIFILTER) RANGE

These units are suitable for MDF, chipboard, hardwood and sanding dust. Several cylindrical filter sleeves with a relatively large area are fitted above the unit body with one or more collection bags below. The filters are supported by a frame which is automatically agitated on shutdown to dislodge fine dust from the filter sleeves. The suction fan is an integral part of the unit body. Units are available for internal or external location

## B (BAGGING) RANGE

Generally of larger capacity than the MF range, these units are suitable for MDF, chipboard, hardwood and sanding dust. Several cylindrical filter sleeves with a relatively large area are fitted above the unit body with two or more polythene collection bags below. The filters are supported by a frame which is automatically agitated on shut-down to dislodge fine dust from the filter sleeves. A suction fan may be separately specified dependent on the required duty. Units are available for internal or external location.

## H (HOPPER) RANGE

These are almost identical to the B range, but instead of discharging into bags they are supported by steelwork such that the waste can fall into a skip or transfer system. Because of their height, they are normally located externally.

## JH (JUMBO HOPPER) RANGE

Similar to the H range but of generally greater capacity. Ideally suited to larger woodworking applications where the volume of waste is likely to be substantial.

## TF (THRUFLOW) RANGE

These units provide no waste collection facility – instead they filter around 80% of the air thus concentrating the waste and transferring it to a collection point or further system downstream. They have many applications and are particularly suited to increasing the capacity of an existing system.

## CH (CHAINFILTER) RANGE

The crucial feature of this range of unit is that waste is dragged to one end for discharge by a chain conveyor. This arrangement eliminates the need for a hopper and therefore there is virtually no limit to the size of plant. They are also ideal for sites where the height of an equivalent hopper plant would be unacceptable. Filter cleaning is normally provided by reverse air regeneration fans.

## CY (CYCLOFILTER) RANGE

These sophisticated units employ the cyclone principal to pre-separate most of the heavy waste leaving the conventional filters to trap the remaining small volume of fine waste. This feature virtually eliminates the possibility of the blockages often associated with larger systems and a further attraction of the range is its small ground area requirement. Filter cleaning is generally by means of reverse air.

Throughout our range, the following suffices will be found:

- O – open sided for applications with no explosion risk
- CS – closed sided for applications with explosion risk
- WP – weatherproof for external use
- NR – noise reduced

## INDEX

### DUCTWORK & ACCESSORIES

- 1 Airflow Indicators
- 2 Rigid ducting
- 3 Bends
- 4 Jointing clips/flanges
- 5 Branches/trouserpieces
- 6 Reducers
- 7 Hangers
- 8 Dampers/sweeps/manifolds/silencers
- 9 Machine exhaust hoods & fittings
- 10 Flexible hose/collars
- 11 Accessory kits for mobile units
- 12 Polythene bags/filters/impellers
- 13 SMART filters

### FILTER RANGE LISTING

- 14 WV range
- 15 Woodwork range
- 16 MF/1 range
- 17 MF/2 range
- 18 MF/3 range
- 19 MF/4 range
- 20 B/1 range
- 21 B/2 range
- 22 B/3 range
- 23 B/4 range
- 24 H/1 range
- 25 H/2 range
- 26 H/3 range
- 27 H/4 range
- 28 TF/2 range
- 29 TF/3 range
- 30 TF/4 range
- 31 JH range
- 32 CH range

### MISCELLANEOUS

- 33 Fans & Control Panels
- 34 Rotary valves
- 35 Downdraught benches
- 36 Dryback spraybooths
- 37 Dryback spraybooths
- 38 Service Tariff



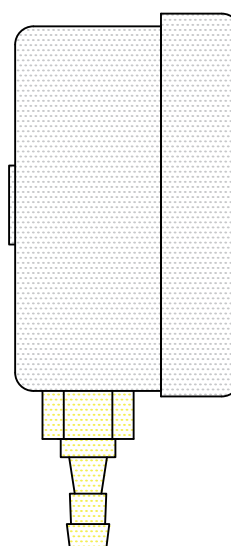
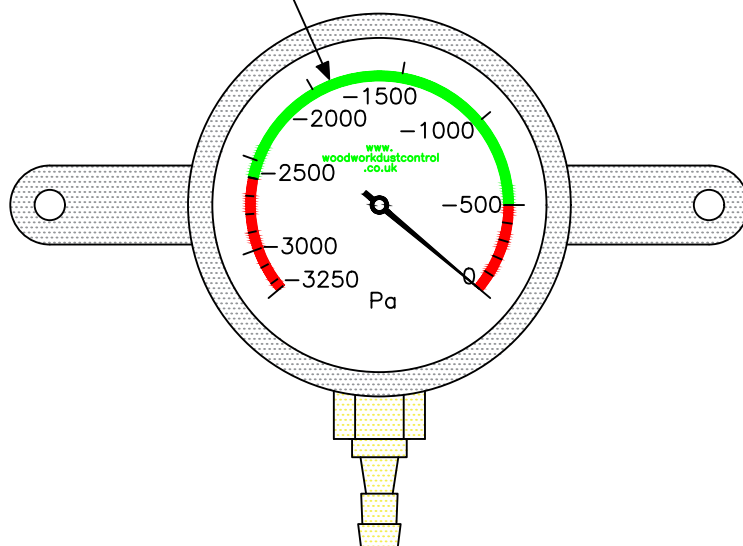
## AIRFLOW INDICATORS

PRODUCT	£
AIRFLOW INDICATOR	108.00

Prices ex works plus VAT

SPECIFICATION	DESCRIPTION
NOMINAL DIAL SIZES	63mm
CASE	Stainless Steel IP54
CONNECTIONS	6mm O.D Barbed Spigot
MOUNTING	Always mount vertically Can be mounted on horizontal or vertical ducting
ACCURACY RANGES	Class 1.6%
SENSING	Copper Beryllium Capsule
CASE & BEZEL	Stainless Steel Case
CONNECTION	Brass
WINDOW	Perspex
DIAL	White finish Aluminum with printed red band
POINTER	Aluminum

Green self-Adhesive overlay cut band to suit



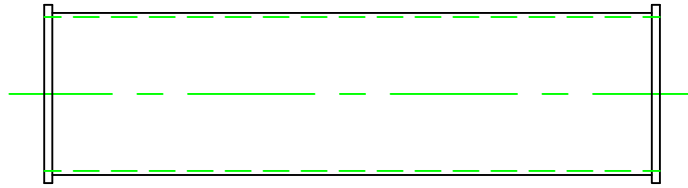
There isn't a specific legal requirement to have air-flow indicators or similar fitted to an LEV system. But as an employer you do by law have to make sure your LEV systems keeps working properly. One of the main reasons why LEV's fail to meet CoSHH standards is because the airflow is not acceptable and therefore control of the dust is lost. This could be for a number of reasons: build-up of material, damage to ducting etc.

One simple but effective way of checking this is the use of airflow indicators at the hood, this will provide you reassurance that the flow-rate is maintained, that the protection for employees is there and that you're not wasting money. There are other ways of checking the airflow, such as using a pitot tube and anemometer.

Visual inspections like using a dust lamp or a smoke tracer(with the work process running) can be used to check the dust is being controlled. However, an airflow indicator is currently the only method that will show the operator or supervisor immediately if there's a problem, and HSE's LEV guidance HSG 258[1] recommends these are fitted.



## RIGID DUCTWORK

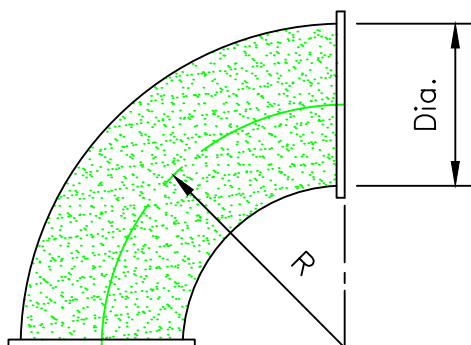


Light gauge galvanised sheet metal straight ducting with turned flange (or lip) at each end.

<u>Dia.</u>	<u>£/1.25 metre</u>	<u>£/2 metre</u>
80 mm	-	38.00
100 mm	-	39.00
120 mm	-	43.00
150 mm	-	48.00
180 mm	-	56.00
200 mm	-	59.00
225 mm	38.00	-
250 mm	39.00	-
275 mm	42.00	-
300 mm	45.00	-
350 mm	56.00	-
400 mm	59.00	-
450 mm	68.00	-
500 mm	81.00	-
550 mm	85.00	-
600 mm	90.00	-
650 mm	106.00	-
700 mm	110.00	-

ALL PRICES EX. WORKS + V.A.T.

## BENDS

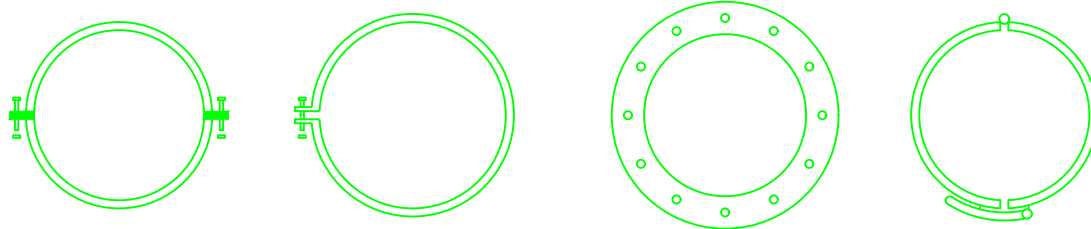


$R = 1.5 \times \text{dia. to centre Line}$   
 i.e. throat radius = duct diameter

Light gauge galvanised sheet metal bends.  
 Duct ends lipped to suit standard jointing clips or flanges.  
 Pressed bends up to 200 mm. Larger bends segmented.

Dia.	£/90°	£/60°	£/45°	£/30°
80 mm	22.00	20.00	19.00	19.00
100 mm	26.00	24.00	23.00	19.00
120 mm	28.00	26.00	24.00	23.00
150 mm	39.00	35.00	29.00	32.00
180 mm	76.00	71.00	56.00	40.00
200 mm	81.00	72.00	58.00	46.00
225 mm	86.00	82.00	62.00	54.00
250 mm	92.00	84.00	70.00	56.00
275 mm	98.00	92.00	71.00	59.00
300 mm	105.00	96.00	74.00	61.00
350 mm	124.00	114.00	86.00	69.00
400 mm	158.00	140.00	105.00	81.00
450 mm	187.00	172.00	137.00	87.00
500 mm	234.00	201.00	143.00	114.00
550 mm	296.00	261.00	190.00	150.00
600 mm	344.00	297.00	237.00	190.00
650 mm	391.00	338.00	259.00	212.00
700 mm	426.00	419.00	319.00	239.00

## TENSION CLIPS / FLANGES

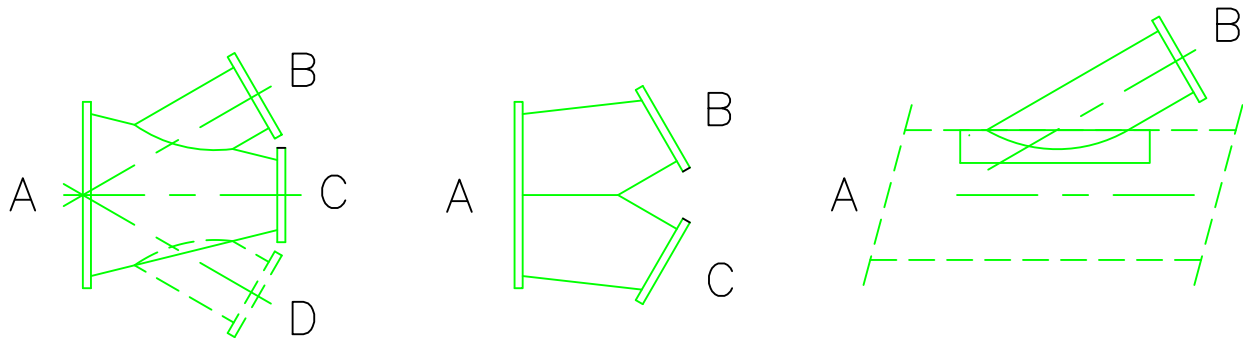


\*Fitted with internal rubber seals

Duct ends lipped to suit standard tension clips or flanges.

<u>Dia.</u>	<u>£/Tension Clip</u>	<u>£/Wide Clip</u>	<u>£/Loose Flange</u>	<u>£/Rapid-Lock Pull-Ring*</u>
80 mm	9.00		15.00	15.00
100 mm	9.00		16.00	15.00
120 mm	10.00		18.00	18.00
150 mm	10.00		20.00	18.00
180 mm	11.00		21.00	19.00
200 mm	11.00		24.00	19.00
225 mm	11.00		25.00	20.00
250 mm	11.00		30.00	21.00
275 mm	11.00	16.00	34.00	
300 mm	12.00	16.00	35.00	
350 mm	12.00	18.00	36.00	
400 mm	13.00	18.00	38.00	
450 mm	13.00	18.00	39.00	
500 mm	13.00	19.00	44.00	
550 mm		20.00	46.00	
600 mm		21.00	55.00	
650 mm		22.00	57.00	
700 mm			58.00	

## BRANCHES / TROUSERPIECES / BRANCH ON PLATE



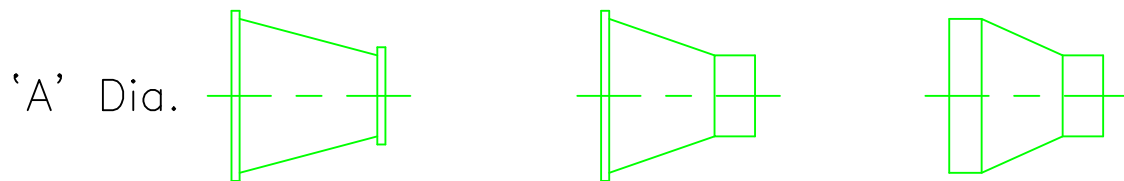
Light gauge galvanised sheet branchpieces and trouserpieces.  
Duct ends lipped to suit standard jointing clips or flanges.

`A' Dia.	£/Single Branchpiece	£/Double Branchpiece	£/Trouserpiece	£/Branch on Plate
80 mm	65.00	92.00	86.00	54.00
100 mm	65.00	95.00	86.00	54.00
120 mm	68.00	98.00	91.00	74.00
150 mm	70.00	99.00	95.00	76.00
180 mm	86.00	123.00	103.00	82.00
200 mm	92.00	130.00	106.00	86.00
225 mm	96.00	137.00	110.00	91.00
250 mm	98.00	140.00	120.00	98.00
275 mm	103.00	152.00	140.00	113.00
300 mm	107.00	156.00	143.00	117.00
350 mm	141.00	205.00	193.00	120.00
400 mm	180.00	267.00	226.00	180.00
450 mm	237.00	339.00	285.00	230.00
500 mm	268.00	373.00	339.00	272.00
550 mm	307.00	450.00	394.00	316.00
600 mm	379.00	538.00	424.00	339.00
650 mm	404.00	593.00	490.00	391.00
700 mm	424.00	627.00	510.00	424.00

Specify diameters as necessary

Collared ends extra: 80-250 mm £28.00 each  
over 250 mm £37.00 each

## REDUCERS



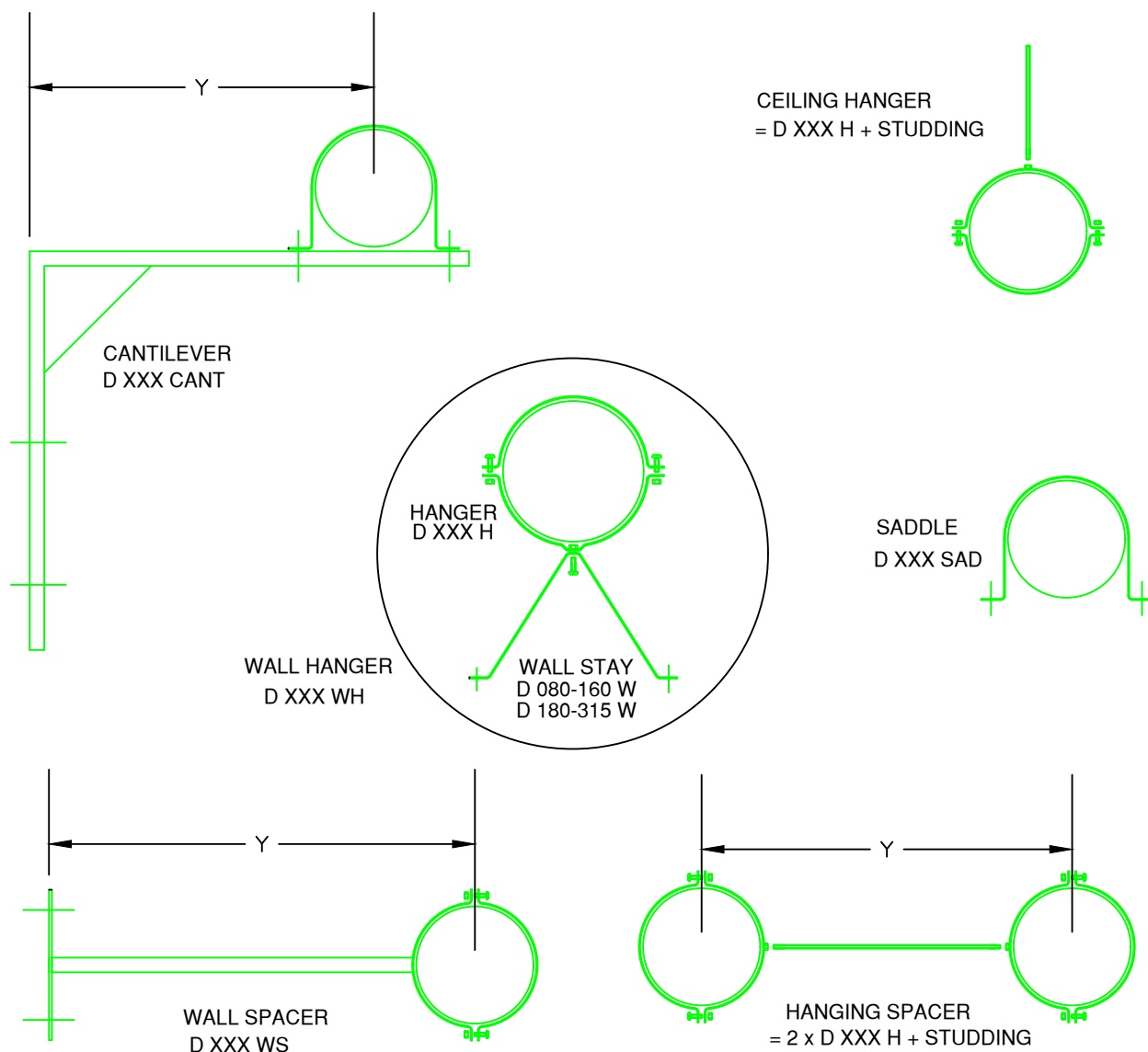
Light gauge galvanised sheet metal reducer or taper.

The following prices are based on the diameter of the largest end of the taper. Standard prices are for the tapers finished with a lip at each end to connect to ductwork with jointing clips. Separate prices are shown for tapers with 1 or 2 spigots.

<u>'A' Dia.</u>	<u>£/Standard - Length</u>	<u>£/1 Spigot</u>	<u>£/2 Spigots</u>
80 mm	30.00 - 120 mm	39.00	43.00
100 mm	30.00 - "	39.00	44.00
120 mm	32.00 - "	39.00	46.00
150 mm	34.00 - "	41.00	47.00
180 mm	34.00 - 150 mm	42.00	56.00
200 mm	35.00 - "	43.00	58.00
225 mm	38.00 - "	46.00	59.00
250 mm	39.00 - "	47.00	60.00
275 mm	41.00 - 200 mm	47.00	65.00
300 mm	41.00 - "	54.00	66.00
350 mm	54.00 - "	63.00	74.00
400 mm	61.00 - "	82.00	101.00
450 mm	66.00 - "	86.00	105.00
500 mm	71.00 - 300 mm	91.00	113.00
550 mm	72.00 - "	93.00	118.00
600 mm	76.00 - "	99.00	124.00
650 mm	91.00 - "	114.00	129.00
700 mm	98.00 - "	124.00	131.00

ADD 80mm FOR LENGTH OF EACH SPIGOT

# HANGERS



'XXX' Dia.	£ CANT	£ H	£ W	£ WS	£ SAD
80 mm	21.00	10.00	13.00	20.00	10.00
100 mm	22.00	10.00	13.00	21.00	10.00
120 mm	23.00	11.00	14.00	22.00	10.00
150 mm	24.00	13.00	14.00	22.00	11.00
180 mm	25.00	13.00	16.00	22.00	11.00
200 mm	28.00	13.00	16.00	22.00	11.00
225 mm	28.00	13.00	16.00	24.00	12.00
250 mm	29.00	14.00	16.00	25.00	12.00

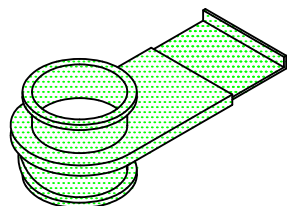
SPECIFY 'XXX' DIA AND 'Y' DIMENSION

Wire rope (3mm) : £70.00 per 100m roll

Wire rope grips : £5.00 each

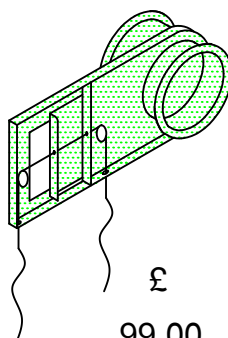
## DAMPERS, SWEEPS, MANIFOLDS, SILENCERS

### Slide Dampers



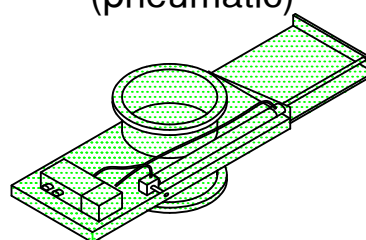
Dia.	£
80 mm	44.00
100 mm	48.00
120 mm	56.00
150 mm	59.00
180 mm	65.00
200 mm	71.00
225 mm	82.00
250 mm	86.00
275 mm	98.00
300 mm	107.00
350 mm	122.00
400 mm	158.00
450 mm	168.00
500 mm	185.00

### Remote Damper



£
99.00
101.00
107.00
110.00
118.00
123.00
134.00
139.00
153.00
162.00
173.00
210.00
221.00
240.00

### Auto Dampers (pneumatic)

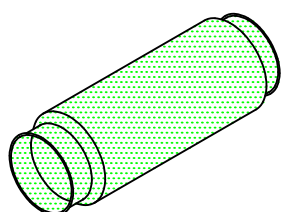


£
225.00
240.00
257.00
301.00
392.00
444.00
495.00
516.00
POA
POA
POA
POA
POA
POA

1 cylinder  
2 cylinders

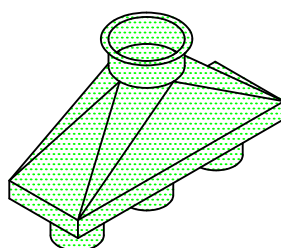
Additional delivery charges may be applicable to all auto dampers.

### Silencers



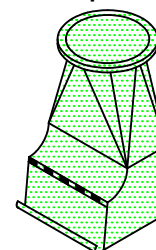
Dia.	£
180 mm	287.00
200 mm	296.00
225 mm	299.00
250 mm	319.00
275 mm	339.00
300 mm	360.00
350 mm	384.00
400 mm	395.00
450 mm	436.00

### Manifolds



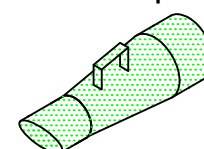
£	
2 Spigot	184.00
3 Spigot	226.00
4 Spigot	257.00
5 Spigot	296.00

### Floorsweeps



Dia.	£
120 mm	103.00
150 mm	186.00
180 mm	194.00
200 mm	221.00

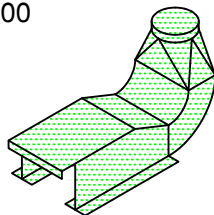
### Handsweeps



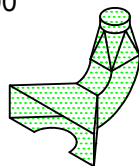
3" / 4" flex : £91.00

# MACHINE HOODS

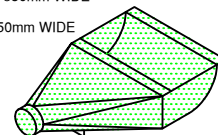
1. Spindle moulder  
£197.00



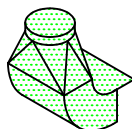
2. Spindle moulder  
£190.00



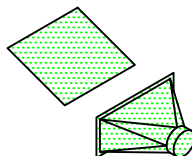
3. Combined planer/thick  
£197.00 UP TO 380mm WIDE  
£237.00 380- 650mm WIDE



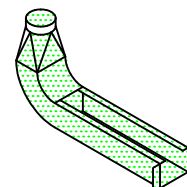
4. Thicknesser  
£197.00



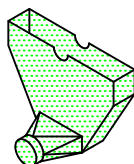
5. Tilt arbor saw  
£151.00



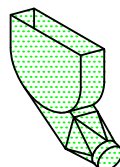
6. Crosscut/radial arm saw  
£163.00



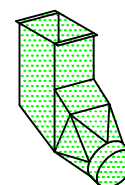
7. Re-saw pit  
£256.00



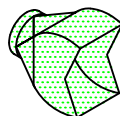
8. Circular/rip saw  
£183.00



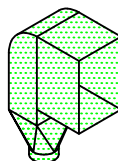
9. Bandsaw  
£173.00



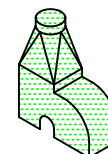
10. Dolly sander  
£162.00



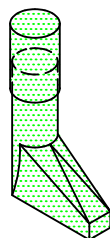
11. Pad sander  
£162.00



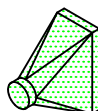
12. Tenoner  
£168.00



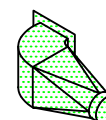
13. Sawbench top guard  
£168.00



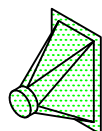
14. General purpose  
£138.00



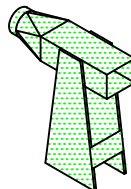
15. General purpose  
£159.00



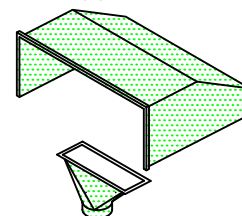
16. General purpose  
£138.00



17. Lathe  
£250.00



18. Chopsaw Canopy &  
Extract hopper £269.00



We specialise in the manufacture of purpose made machine exhaust hoods for optimum dust extraction efficiency. These are generally made to order although we have standard hoods for many common machines.

Construction is usually from galvanised or black mild steel sheet and finished in our standard blue colour.

Above are shown diagrams of standard designs. Prices should be used only as a guide.

PLEASE SUPPLY SKETCH AND DIMENSIONS WHEN ORDERING HOODS



## FLEXIBLE HOSE & ACCESSORIES

We offer one code of flexible hose designed specifically for woodwork dust control applications. It comprises a PVC coated spring steel helix trapped between a 2 ply translucent polurethane liner and cover.

This specification provides a smooth bore (minimising resistance to airflow), greater resistance to abrasive wear than any available comparable product and combines lightness with a very high degree of flexibility and is therefore ideal for machines of every type.

Flex collars fit inside the flexible hose and are lipped one end for standard jointing clip to our range of products. A flexible hose clip is available to secure the flex to the collar.

Double collars are available for joining two lengths of flexible hose together.

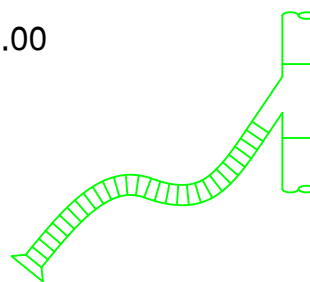
Dia. Inches	Dia. mm	£/Metre	£/Flex Collar	£/Flex Clip	£/Double Collar
1.5"	38 mm	13.00	22.00	6.00	29.00
2"	50 mm	13.00	22.00	6.00	29.00
2.5"	64 mm	15.00	22.00	6.00	29.00
3"	76 mm	18.00	13.00	6.00	29.00
3.25"	82 mm	18.00	15.00	7.00	29.00
4"	102 mm	21.00	15.00	7.00	29.00
5"	127 mm	25.00	18.00	7.00	29.00
5.5"	140 mm	29.00	18.00	8.00	29.00
6"	152 mm	30.00	19.00	8.00	29.00
6.3"	160 mm	35.00	19.00	8.00	29.00
7"	178 mm	37.00	19.00	8.00	32.00
8"	204 mm	39.00	20.00	8.00	34.00
9"	229 mm	42.00	21.00	9.00	35.00
10"	254 mm	44.00	22.00	9.00	36.00
12"	305 mm	51.00	25.00	10.00	37.00

### Stayput Hose & Accessories

Ideal for routers, disc sanders, bandsaws etc, 'Stayput' hose can be orientated to the most effective position for waste capture. It is self-supporting and will remain in any position as desired by the operator. A standard kit consists of a 900 mm length of 3" hose, a captor hood and a lipped connection to 100 dia rigid ductwork.

Stayput Kit A (Rectangular captor hood) : £150.00

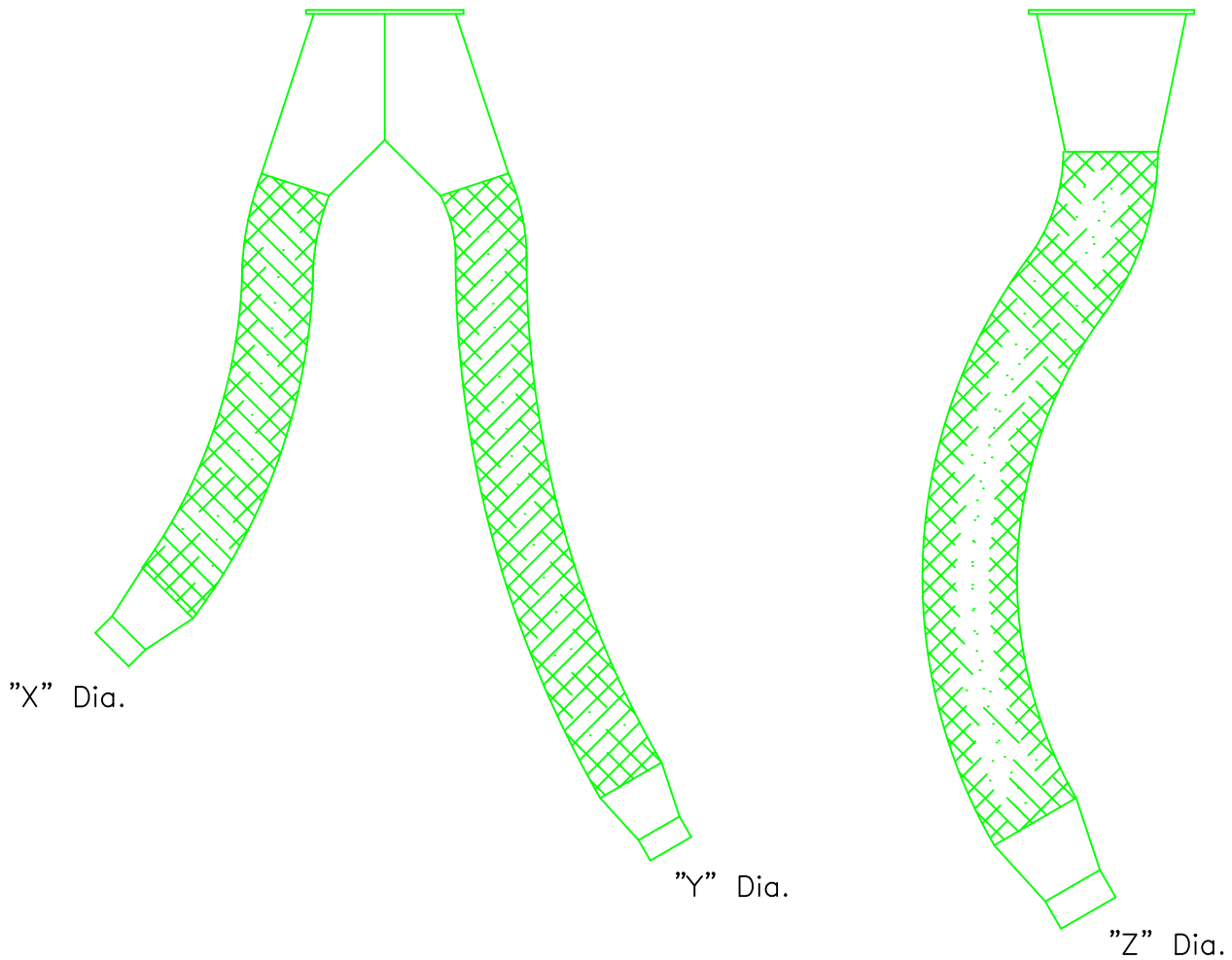
Stayput Kit B (Round captor hood) : £150.00



## FLEXIBLE KITS FOR MOBILE UNITS

KIT "A"

KIT "B"



To suit models - Woodwork MF1 and Woodwork 1 Mobile.

### KIT "A" COMPRISES

- 1 - Unit Tension Clip
- 1 - Trouserpiece
- 4 - Flex Collars
- 2 - 3 Metre Lengths Flex
- 4 - Flex Clips
- 2 - Spigoted M/c connector

£394.00

-----

Please specify `X' & `Y'

### KIT "B" COMPRISES

- 1 - Unit Tension Clip
- 1 - Reducer
- 2 - Flex Collars
- 1 - 3m Length Flex
- 2 - Flex Clips
- 1 - Spigoted M/c connector

£235.00

-----

Please specify `Z'

## MISCELLANEOUS ITEMS

### Polythene Collection Bags

790mm x 1219mm x 400 Gauge to suit 20" spigot £56.00 per 50

### Filter Sleeves (Terylene Needlefelt)

20" dia. x 48"	to suit Woodwork 1,2,3 & 4	£44.00 each
7" dia. x 81.25"	to suit Chainfilter	£34.00 each
6.5" dia. x 48"	to suit Multifilter type MF1, MF2, MF3 & MF4	£25.00 each
7" dia. x 71"	to suit Thruflow, Bagging and MFSUPER units	£32.00 each
7" dia. x 91"	to suit Jumbo Hopper Filters	£35.00 each
20" dia. x 48"	to suit SMART filter	£132.00 each
20" dia. x 48"	to suit SMART ANTI-STATIC	£149.00 each

6.5" dia wood disc to suit 6.5" dia filter sleeve	£6.00 each
7.5" dia wood disc to suit 7.5" dia filter sleeve	£7.00 each

### Clamping Bands

Standard 20" dia	£ 35.00
Specials made to customer dimension	£ 37.00

### Fan Impellers

12" dia. to suit Woodwork Mini	£249.00
13.5" dia. to suit Woodwork 1 & MF/1	£259.00
15" dia. to suit Woodwork 2, 3, MF/2 & MF/3	£290.00
16.5" dia. to suit Woodwork 4 & MF/4	£335.00
18" dia. to suit same fan size	£395.00
21" dia. to suit same fan size	£435.00
24" dia. to suit same fan size	£470.00
27" dia. to suit same fan size	£550.00
30" dia. to suit same fan size	£628.00
33" dia. to suit same fan size	£709.00
36" dia. to suit same fan size	£831.00
39" dia. to suit same fan size	£953.00
42" dia. to suit same fan size	£1033.00

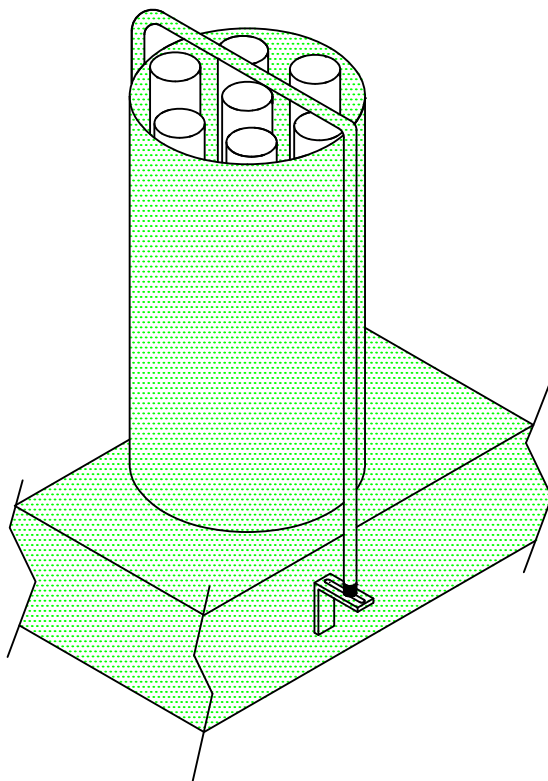
### Airflow Indicators

63mm dia. Airflow indicator for duct mounting £ 108.00

### ATEX Vent Panels

0.162 M <sup>2</sup> MF & BM Range 280mm x 1000mm	£ 446.00
0.268 M <sup>2</sup> B, TF, H, JH & CH Range 570mm x 670mm	£ 529.00

## SMART FILTERS



ITEM	£
SMART filter	132.00
Complete kit	315.00
SMART anti-static filter	150.00
Complete kit anti-static	331.00

The SMART filter is of the same external dimensions as a standard 20" dia x 48" filter and appears identical. Instead of comprising a simple cylinder however, the SMART filter contains seven internal cylindrical filter elements. This construction increases the filter area sufficiently to permit the filtration of fine dust. Thus a simple bagging unit can be converted to handle MDF and hardwood waste by replacing the standard filter(s) with SMART filters.

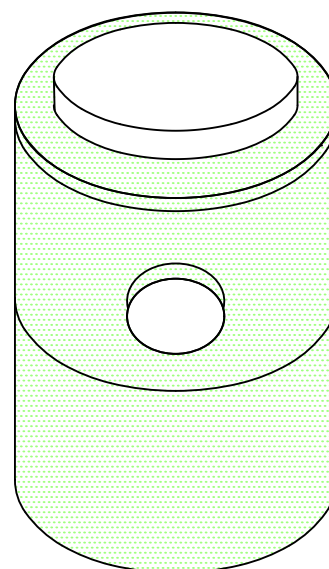
The SMART filter is supported by an aluminium U tube mounted on rubber feet. Such an arrangement allows the operator to periodically switch off the suction fan and manually agitate the filter(s). This maintains filtration efficiency and prolongs filter life.

The kit also includes nylon lattices to shape the filter elements and two adjustable brackets to allow fitment to units of differing body width.

Overall height approx 1400mm ( from bottom of filter hem to top of support tube )

## WV RANGE

MODEL		WV2	WV4
MOTOR	NO / kW	2 x 1kW	3 x 1kW
	SUPPLY	240/110v	240/16A
STORAGE	litres	90	200
VOLUME	l/s	109	163
	cmh	392	582
DIA	mm	460	600
HEIGHT	mm	584	940
WEIGHT	kg	22	40
INLET DIA	mm	102 (4")	
STATIC	Pa	25000	25000
PRICE	£	1140.00	1924.00



POPULAR ACCESSORIES	BRIEF DESCRIPTION	PRICE £
Castor set	X frame base with swivel castors	132.00
Barrow ( Included with WV4 )	Sack type barrow, 2 hand + 2 wheels	267.00
Filters (Pack of 5)	Paper motor cover filters	16.00
Heavy duty cleaning kit		470.00
Crushproof Hose 3m x 32mm cuff	58mm cuff + 3m x 32mm	81.00
Stepped power tool adaptor 32mm	Rubber hand tool connector, multisize	22.00
102mm clear flexible hose per metre		24.00
Adaptor 100 - 58		18.00
30mm Power tool hose	110 end + 3m hose + step adaptor	81.00

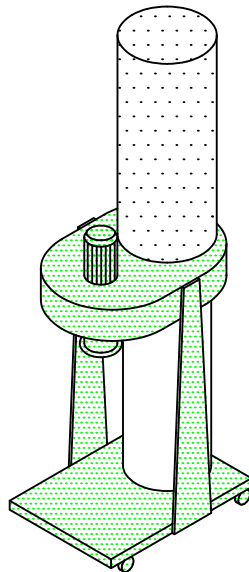
The WV range are drum type extractors ideal for applications where a relatively small volume of waste is produced and a high vacuum pressure is required such as hand tools having a small bore outlet.

The drum is of robust steel construction and the motors require a single phase electrical supply. Mobility can be provided by an optional castor set or heavy duty barrow. The unit can be attached to a small ductwork system to extract from a number of machines. A heavy duty cleaning kit can be supplied as an accessory for general vacuum cleaning. The unit is supplied with 2.5m of 4" (102mm) flexible hose and is suitable for MDF/hardwood.

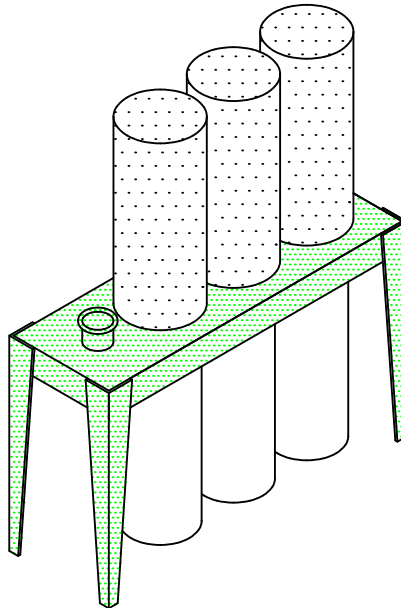
WV units can be run continuously with a 10 min break every 3 hours.

# WOODWORK RANGE

MOBILE WOODWORK 1



WOODWORK 2 - 6 RANGE WOODWORK 3 ILLUSTRATED



SPARES & CONSUMABLES		
Description	Pt No.	£exVAT
Dust bags per 50	poly32	56.00
Filter sleeves ea.	filterww	44.00
Filter bag support		22.00
Clampband	cband	35.00

MODEL		WOODWORK 1	WOODWORK 2	WOODWORK 3	WOODWORK 4	WOODWORK 5	WOODWORK 6
FILTERS		1	2	3	4	5	6
WASTE BAGS		1	2	3	4	5	6
STORAGE	litres	250	500	750	1000	1250	1500
POWER	HP	3.0	5.5	5.5	10	10	10
	kW	2.2	4.0	4.0	7.5	7.5	7.5
VOLUME	cfm	1200	2000	2500	3250	3250	3250
	cmh	2040	3400	4250	5525	5525	5525
LENGTH	mm	1042	1780	2438	3050	3665	4275
WIDTH	mm	660	660	660	660	660	660
HEIGHT	mm	2490	2490	2490	2490	2490	2490
WEIGHT	kg	65	100	115	150	175	200
INLET DIA	mm	180	250	250	275	275	275
PRICE	£	1538.00	2116.00	2378.00	3607.00	4153.00	4709.00

The Woodwork range of units are designed principally for softwood waste although SMART filter kits (page 13) may be fitted for use on hardwood and MDF waste (add 145mm to height). Terylene needlefelt filter medium.

The MOBILE Woodwork 1 units are fitted with castors for mobility and the remainder of the range are static. The range is designed for inside use.

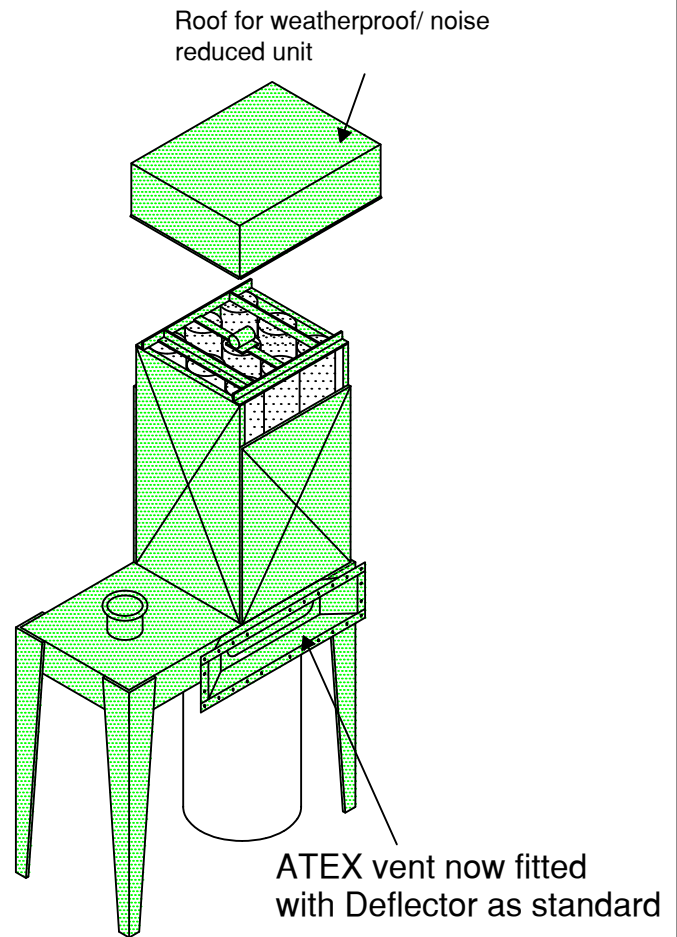
All units are fitted with a direct on line starter excepting the Woodwork 4 which is wired for star/delta. All units are for a 3 phase electrical supply. The Woodwork 1 is also available for single phase ( add £704.00)

## MF/1 RANGE

MODEL	TYPE	£
MF/1/60/O	Open sided	4043.00
MF/1/60/CS	Closed sided	4342.00
MF/1/60/WP	Weatherproof	4394.00
MF/1/60/NR	Reduced noise	5024.00

Prices ex works plus VAT  
Single phase add £704.00

FILTER AREA	ft <sup>2</sup>	61
	m <sup>2</sup>	5.7
MAXIMUM CAPACITY	cfm	1200
	cmh	2040
LENGTH	mm	1168
WIDTH	mm	1000
HEIGHT (max)	mm	2670
WEIGHT	kg	120
POWER	HP	3
	kW	2.2
INLET DIA	mm	180
IMPELLER DIA	mm	343



SPARES & CONSUMABLES		
Description	Pt No.	£exVAT
Dust bags per 50	poly32	56.00
Filter sleeves ea.	filtermf	25.00
6.5" wood disc	wooddisc6.5	6.00
Bin connector	canvas	46.00
Clampband	cband	35.00
ATEX Panel	ATEXMF	446.00

### MULTIFILTER 1 BAG UNIT

This unit is a free standing multifilter available for either inside or outside factory use and suitable for efficiently filtering softwood, MDF, hardwood and sander dust waste.

The filter sleeves (9 off) are manufactured from the highest quality 350g polyester needlefelt, which are automatically shaken each time the unit is switched off.

The metal filter components are manufactured from pre-formed galvanised sheet and hole punched for bolted assembly. The unit is delivered partly pre-assembled. Top, side and end panels, shaker frame and filter sleeves require to be assembled after delivery.

The unit is supplied with a control panel (unwired) containing a direct on line starter for the main fan and a timer for the cleaning shaker motor.

Explosion vent area 0.162 m<sup>2</sup> compliant with ATEX Regulations (with effect from Sept 2004).

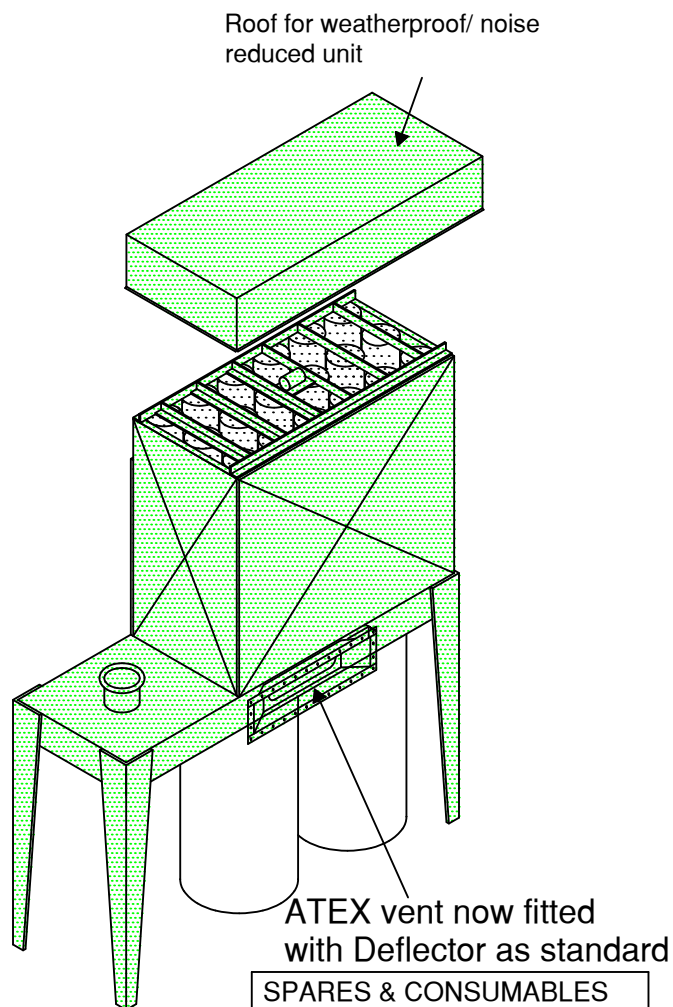
On CS and WP models, the polybag is contained within a free placed metal bin.

## MF/2 RANGE

MODEL	TYPE	£
MF/2/120/0	Open sided	4652.00
MF/2/120/CS	Closed sided	4967.00
MF/2/120/WP	Weatherproof	5261.00
MF/2/120/NR	Reduced noise	6521.00

Prices ex works plus VAT

FILTER AREA	ft <sup>2</sup>	122
	m <sup>2</sup>	11.4
MAXIMUM CAPACITY	cfm	2000
	cmh	3400
LENGTH	mm	1830
WIDTH	mm	1000
HEIGHT (max)	mm	2670
WEIGHT	kg	150
POWER	HP	5.5
	kW	4
INLET DIA	mm	250
IMPELLER DIA	mm	381



SPARES & CONSUMABLES		
Description	Pt No.	£exVAT
Dust bags per 50	poly32	56.00
Filter sleeves ea.	filtermf	25.00
6.5" wood disc	wooddisc6.5	6.00
Bin connector	canvas	46.00
Clampband	cband	35.00
ATEX Panel	ATEXMF	446.00

## MULTIFILTER 2 BAG UNIT

This unit is a free standing multifilter available for either inside or outside factory use and suitable for efficiently filtering softwood, MDF, hardwood and sander dust waste.

The filter sleeves (18 off) are manufactured from the highest quality 350g polyester needlefelt, which are automatically shaken each time the unit is switched off.

The metal filter components are manufactured from pre-formed galvanised sheet and hole punched for bolted assembly. The unit is delivered partly pre-assembled. Top side and end panels, shaker frame and filter sleeves require to be assembled after delivery.

The unit is supplied with a control panel (unwired) containing a direct on line starter for the main fan and a timer for the cleaning shaker motor.

Explosion vent area 0.162 m<sup>2</sup> compliant with ATEX Regulations (with effect from Sept 2004).

On CS and WP models, the polybags are contained within free placed metal bins.

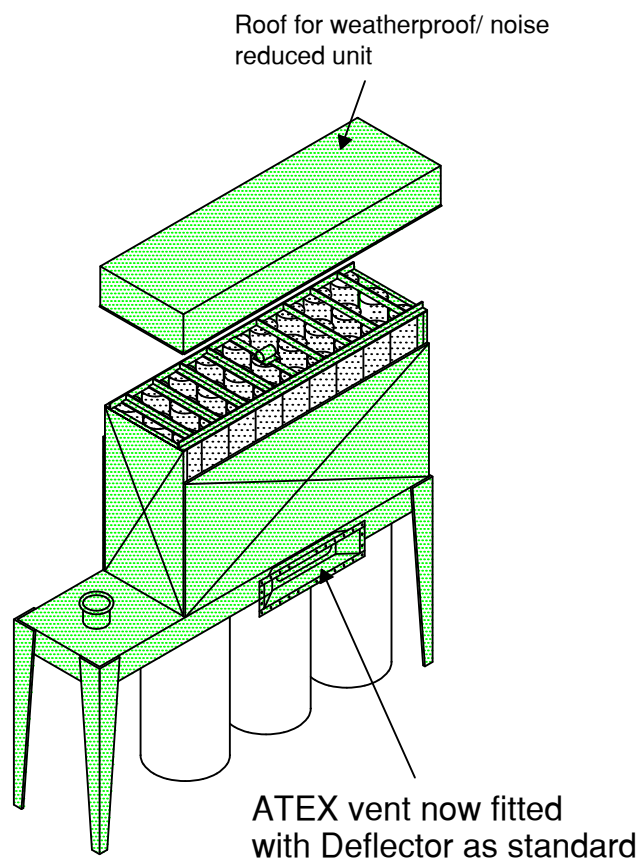


## MF/3 RANGE

MODEL	TYPE	£
MF/3/180/0	Open sided	5072.00
MF/3/180/CS	Closed sided	5780.00
MF/3/180/WP	Weatherproof	5912.00
MF/3/180/NR	Reduced noise	6941.00

Prices ex works plus VAT

FILTER AREA	ft <sup>2</sup>	183
	m <sup>2</sup>	17
MAXIMUM CAPACITY	cfm	2500
	cmh	4250
LENGTH	mm	2440
WIDTH	mm	1000
HEIGHT (max)	mm	2670
WEIGHT	kg	180
POWER	HP	5.5
	kW	4
INLET DIA	mm	250
IMPELLER DIA	mm	381



### SPARES & CONSUMABLES

Description	Pt No.	£exVAT
Dust bags per 50	poly32	56.00
Filter sleeves ea.	filtermf	25.00
6.5" wood disc	wooddisc6.5	6.00
Bin connector	canvas	46.00
Clampband	cband	35.00
ATEX Panel	ATEX MF	446.00

## MULTIFILTER 3 BAG UNIT

This unit is a free standing multifilter available for either inside or outside factory use and suitable for efficiently filtering softwood, MDF, hardwood and sander dust waste.

The filter sleeves ( 27 off) are manufactured from the highest quality 350g polyester needlefelt, which are automatically shaken each time the unit is switched off.

The metal filter components are manufactured from pre-formed galvanised sheet and hole punched for bolted assembly. The unit is delivered partly pre-assembled. Top, side and end panels, shaker frame and filter sleeves require to be assembled after delivery.

The unit is supplied with a control panel (unwired) containing a direct on line starter for the main fan and a timer for the cleaning shaker motor.

Explosion vent area 0.162 m<sup>2</sup> compliant with ATEX Regulations (with effect from Sept 2004).

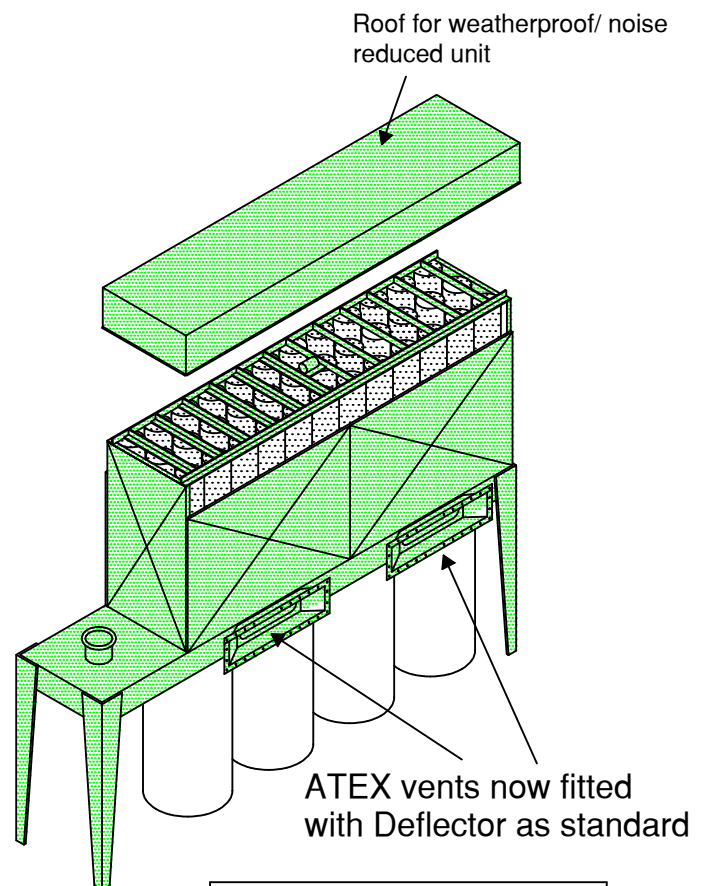
On CS and WP models, the polybags are contained within metal bins attached to the underside of the manifold with a flexible sleeve and quick release clampband.

## MF/4 RANGE

MODEL	TYPE	£
MF/4/240/0	Open sided	7109.00
MF/4/240/CS	Closed sided	8048.00
MF/4/240/WP	Weatherproof	8332.00
MF/4/240/NR	Reduced noise	9781.00

Prices ex works plus VAT

FILTER AREA	ft <sup>2</sup>	245
	m <sup>2</sup>	23
MAXIMUM CAPACITY	cfm	3250
	cmh	5525
LENGTH	mm	3251
WIDTH	mm	1000
HEIGHT (max)	mm	2670
WEIGHT	kg	250
POWER	HP	10
	kW	7.5
INLET DIA	mm	275
IMPELLER DIA	mm	419



SPARES & CONSUMABLES		
Description	Pt No.	£exVAT
Dust bags per 50	poly32	56.00
Filter sleeves ea.	filtermf	25.00
6.5" wood disc	wooddisc6.5	6.00
Bin connector	canvas	46.00
Clampband	cband	35.00
ATEX Panel	ATEX MF	446.00

## MULTIFILTER 4 BAG UNIT

This unit is a free standing multifilter available for either inside or outside factory use and suitable for efficiently filtering softwood, MDF, hardwood and sander dust waste.

The filter sleeves (36 off) are manufactured from the highest quality 350g polyester needlefelt, which are automatically shaken each time the unit is switched off.

The metal filter components are manufactured from pre-formed galvanised sheet and hole punched for bolted assembly. The unit is delivered partly pre-assembled. Top, side and end panels, shaker frame and filter sleeves require to be assembled after delivery.

The unit is supplied with a control panel (unwired) containing a star delta starter for the main fan and a timer for the cleaning shaker motor.

Explosion vent area 0.324 m<sup>2</sup> compliant with ATEX Regulations (with effect from Sept 2004).

On CS and WP models, the polybags are contained within metal bins attached to the underside of the manifold with bin connector flex sleeves & quick release clampbands

## B/1 RANGE

MODEL	TYPE	£
B/1/275/0	Open sided	3728.00
B/1/275/CS	Closed sided	4578.00
B/1/275/WP	Weatherproof	4961.00

B/1/355/O	Open sided	4016.00
B/1/355/CS	Closed sided	4709.00
B/1/355/WP	Weatherproof	5245.00

Prices ex works plus VAT

		RANGE	
		B/1/275	B/1/355
FILTER AREA	ft <sup>2</sup>	275	355
	m <sup>2</sup>	25.5	32.9
MAXIMUM CAPACITY	cfm	2200	2840
	cmh	3740	4897
LENGTH	mm	1295	1295
WIDTH	mm	1220	1220
HEIGHT (max)	mm	3775-4320	4890
WEIGHT	kg	100	110

Cleaning motor 1 No. 0.35A/415V  
 Storage 2 x 9 ft<sup>3</sup> polybags (500 litres)  
 Filter inlet port to suit fan selection

### SINGLE MODULE BAGGING FILTER

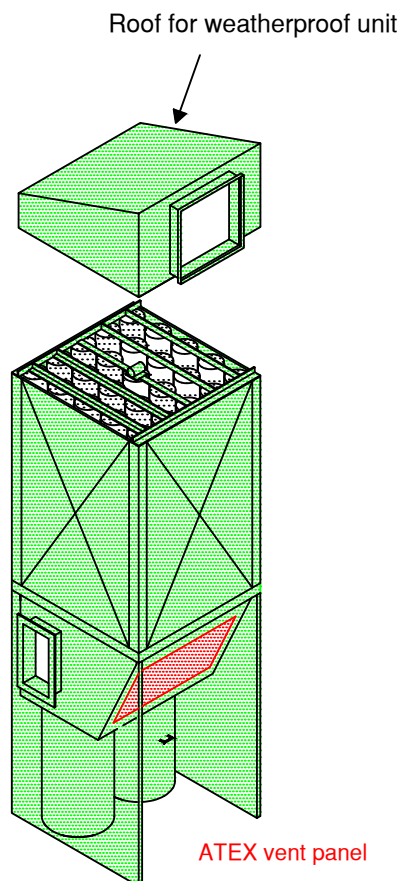
This range of filter units is designed for inside or outside use and permits a fan to be separately specified dependent on the required duty and filter speed. The unit is able to efficiently handle softwood, hardwood, MDF and sanding waste. The taller filters on the B/1/355 models increase the filter area thus allowing greater extraction capacity for a given filter speed. Maximum capacities shown are based on a filter speed of 8 ft/min.

An AUTOMATIC SHAKING mechanism is fitted as standard and operates each time the fan is shut down. The filter sleeves are manufactured from the highest quality 350g polyester needlefelt.

The unit is largely constructed of galvanised sheet steel and is supplied in knockdown form for on site assembly.

Explosion vent area 0.268 m<sup>2</sup> compliant with ATEX regulations (Sept 2004 on).

On CS and WP models, the polybags are contained within free placed metal bins.



SPARES & CONSUMABLES		
Description	Pt No.	£exVAT
Dust bags per 50	poly32	56.00
Filter sleeves 275	filterTF	32.00
Filter sleeves 355	filterJH	35.00
7" Wood Disc	wooddisc7	7.00
Clampband	cband	35.00
Enclosure doors	bdoor	436.00
ATEX Panel	ATEX B	529.00

## B/2 RANGE

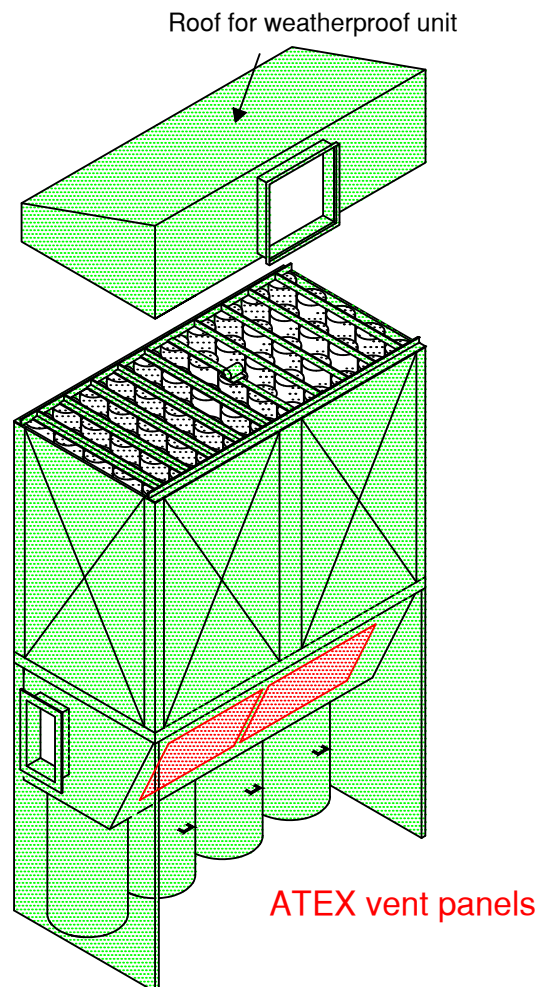
MODEL	TYPE	£
B/2/550/0	Open sided	6137.00
B/2/550/CS	Closed sided	7597.00
B/2/550/WP	Weatherproof	8174.00

B/2/710/O	Open sided	6715.00
B/2/710/CS	Closed sided	8174.00
B/2/710/WP	Weatherproof	8752.00

		RANGE	
		B/2/550	B/2/710
FILTER AREA	ft <sup>2</sup>	550	710
	m <sup>2</sup>	51	66
MAXIMUM CAPACITY	cfm	4400	5680
	cmh	7480	9790
LENGTH	mm	2440	2440
WIDTH	mm	1220	1220
HEIGHT (max)	mm	3775-4320	4890
WEIGHT	kg	200	220

SPARES & CONSUMABLES		
Description	Pt No.	£exVAT
Dust bags per 50	poly32	56.00
Filter sleeves 550	filterTF	32.00
Filter sleeves 710	filterJH	35.00
7" Wood Disc	wooddisc7	7.00
Clampband	cband	35.00
Enclosure doors	bdoor	866.00
ATEX Panel	ATEX B	529.00

All prices ex works plus VAT



Cleaning motor 1 No. 0.35A/415V  
Storage 4 x 9 ft<sup>3</sup> polybags (1000 litres)  
Filter inlet port to suit fan selection

### DOUBLE MODULE BAGGING FILTER

This range of filter units is designed for inside or outside use and permits a fan to be separately specified dependent on the required duty and filter speed. The unit is able to efficiently handle softwood, hardwood, MDF and sanding waste. The taller filters on the B/2/710 models increase the filter area thus allowing greater extraction capacity for a given filter speed. Maximum capacities shown are based on a filter speed of 8 ft/min.

An AUTOMATIC SHAKING mechanism is fitted as standard and operates each time the fan is shut down. The filter sleeves are manufactured from the highest quality 350g polyester needlefelt.

The unit is largely constructed of galvanised sheet steel and is supplied in knockdown form for on site assembly.

Explosion vent area 0.536 m<sup>2</sup> compliant with ATEX regulations (Sept 2004 on).

On CS and WP models, the polybags are contained within free placed metal bins.

## B/3 RANGE

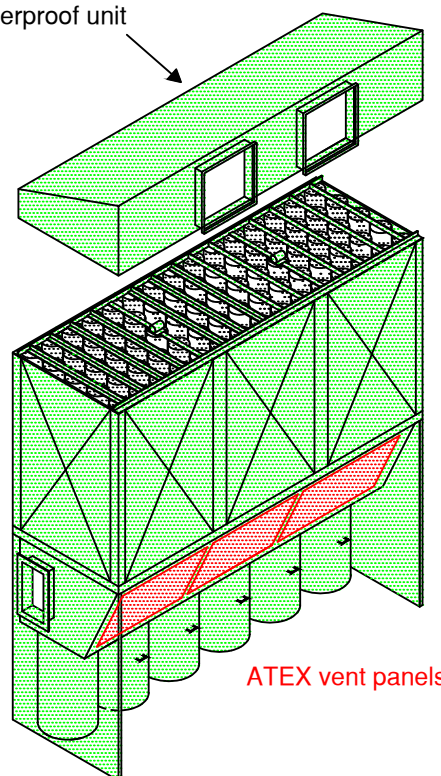
MODEL	TYPE	£
B/3/825/0	Open sided	8999.00
B/3/825/CS	Closed sided	11036.00
B/3/825/WP	Weatherproof	11807.00

B/3/1065/O	Open sided	9865.00
B/3/1065/CS	Closed sided	11891.00
B/3/1065/WP	Weatherproof	12668.00

Prices ex works plus VAT

		RANGE	
		B/3/825	B/3/1065
FILTER AREA	ft <sup>2</sup>	825	1065
	m <sup>2</sup>	76	99
MAXIMUM CAPACITY	cfm	6600	8520
	cmh	11220	14484
LENGTH	mm	3580	3580
WIDTH	mm	1220	1220
HEIGHT (max)	mm	3775-4320	4890
WEIGHT	kg	300	330

Roof for weatherproof unit



ATEX vent panels

Cleaning motor 2 No. 0.35A/415V  
Storage 6 x 9 ft<sup>3</sup> polybags (1500 litres)  
Filter inlet port to suit fan selection

SPARES & CONSUMABLES		
Description	Pt No.	£exVAT
Dust bags per 50	poly32	56.00
Filter sleeves 825	filterTF	32.00
Filter sleeves 1065	filterJH	35.00
7" Wood Disc	wooddisc7	7.00
Clampband	cband	35.00
Enclosure doors	bdoors	1302.00
ATEX Panel	ATEX B	529.00

### TRIPLE MODULE BAGGING FILTER

This range of filter units is designed for inside or outside use and permits a fan to be separately specified dependent on the required duty and filter speed. The unit is able to efficiently handle softwood, hardwood, MDF and sanding waste. The taller filters on the B/3/1065 models increase the filter area thus allowing greater extraction capacity for a given filter speed. Maximum capacities shown are based on a filter speed of 8 ft/min.

An AUTOMATIC SHAKING mechanism is fitted as standard and operates each time the fan is shut down. The filter sleeves are manufactured from the highest quality 350g polyester needlefelt.

The unit is largely constructed of galvanised sheet steel and is supplied in knockdown form for on site assembly.

Explosion vent area 0.80 m<sup>2</sup> compliant with ATEX regulations (Sept 2004 on).

On CS and WP models, the polybags are contained within free placed metal bins.

ALL PRICES EX. WORKS + V.A.T.

## B/4 RANGE

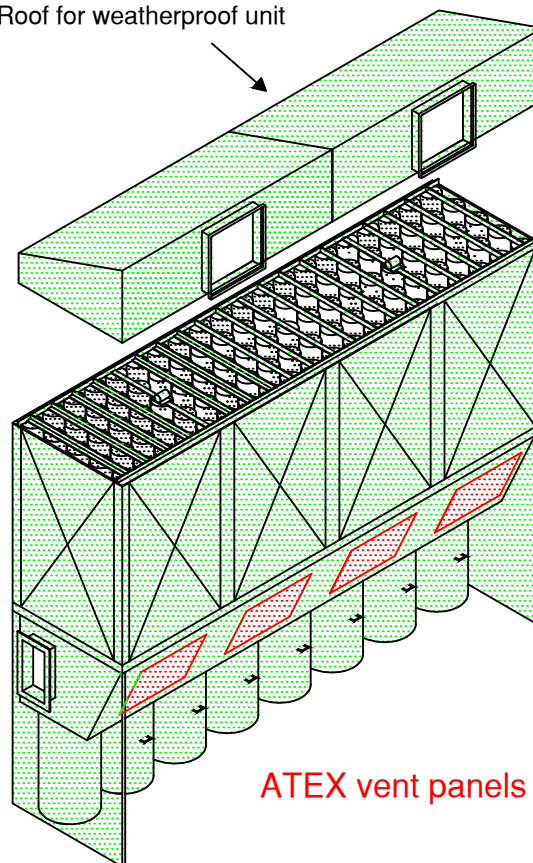
MODEL	TYPE	£
B/4/1100/O	Open sided	11886.00
B/4/1100/CS	Closed sided	14805.00
B/4/1100/WP	Weatherproof	15771.00

B/4/1420/O	Open sided	12989.00
B/4/1420/CS	Closed sided	15965.00
B/4/1420/WP	Weatherproof	16921.00

Prices ex works plus VAT

		RANGE	
		B/4/1100	B/4/1420
FILTER AREA	ft <sup>2</sup>	1100	1420
	m <sup>2</sup>	102	132
MAXIMUM CAPACITY	cfm	8800	11360
	cmh	14960	19312
LENGTH	mm	4880	4880
WIDTH	mm	1220	1220
HEIGHT (max)	mm	3775-4320	4890
WEIGHT	kg	400	440

Roof for weatherproof unit



ATEX vent panels

Cleaning motor 2 No. 0.35A/415V  
Storage 8 x 9 ft<sub>3</sub> polybags (2000 litres)  
Filter inlet port to suit fan selection

SPARES & CONSUMABLES		
Description	Pt No.	£exVAT
Dust bags per 50	poly32	56.00
Filter sleeves 1100	filterTF	32.00
Filter sleeves 1420	filterJH	35.00
7" Wood Disc	wooddisc7	7.00
Clampband	cband	35.00
Enclosure doors	bdoor	1444.00
ATEX Panel	ATEX B	529.00

### FOUR MODULE BAGGING FILTER

This range of filter units is designed for inside or outside use and permits a fan to be separately specified dependent on the required duty and filter speed. The unit is able to efficiently handle softwood, hardwood, MDF and sanding waste. The taller filters on the B/4/1420 models increase the filter area thus allowing greater extraction capacity for a given filter speed. Maximum capacities shown are based on a filter speed of 8 ft/min.

An AUTOMATIC SHAKING mechanism is fitted as standard and operates each time the fan is shut down. The filter sleeves are manufactured from the highest quality 350g polyester needlefelt.

The unit is largely constructed of galvanised sheet steel and is supplied in knockdown form for on site assembly.

Explosion vent area 1.07 m<sup>2</sup> compliant with ATEX regulations (Sept 2004 on).

On CS and WP models, the polybags are contained within free placed metal bins.

ALL PRICES EX. WORKS + V.A.T.

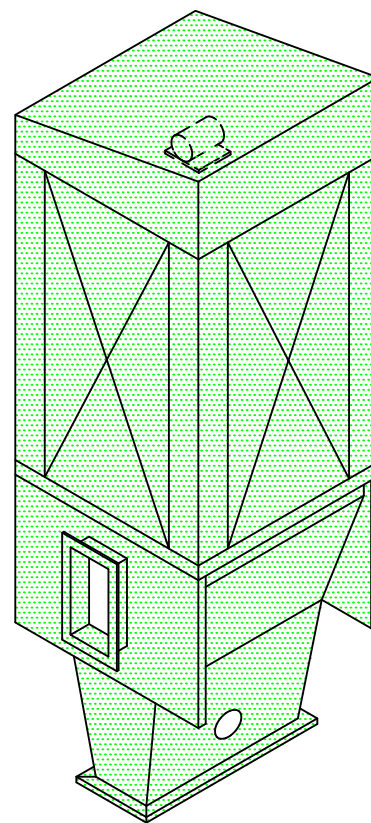
## H/1 RANGE

MODEL	TYPE	£
H/1/275/WP	Weatherproof	4715.00
H/1/355/WP	Weatherproof	5003.00

Prices ex works plus VAT

		RANGE	
		H/1/275	H/1/355
FILTER AREA	ft <sup>2</sup>	275	355
	m <sup>2</sup>	25.5	32.9
MAXIMUM CAPACITY	cfm	2200	2840
	cmh	3740	4897
LENGTH	mm	1220	1220
WIDTH	mm	1220	1220
HEIGHT (max)	mm	4320	4890
WEIGHT	kg	100	110

Cleaning motor 1 No. 0.35A/415V  
Hopper discharge to suit rotary valve  
Filter inlet port to suit fan selection



SPARES & CONSUMABLES		
Description	Pt No.	£exVAT
Filter sleeves 275	filterTF	32.00
Filter sleeves 355	filterJH	35.00
7" Wood disc	wooddisc7	7.00
ATEX Panel	ATEX H	529.00

### SINGLE MODULE WEATHERPROOF HOPPER FILTER

This range of filter units is designed for inside or outside use and permits a fan to be separately specified dependent on the required duty and filter speed. The unit is able to efficiently handle softwood, hardwood, MDF and sanding waste. The filter plant is normally positioned on steelwork such that waste can discharge through a rotary valve either under gravity into a skip or into a transfer system.

The taller filters on the H/1/355 model increase the filter area thus allowing greater extraction capacity for a given filter speed. Maximum capacities shown are based on a filter speed of 8 ft/min.

An AUTOMATIC SHAKING mechanism is fitted as standard and operates each time the fan is shut down. The filter sleeves are manufactured from the highest quality 350g polyester needlefelt.

The unit is largely constructed of galvanised sheet steel and is supplied in knockdown form for on site assembly.

Explosion vent area 0.27 m<sup>2</sup> compliant with ATEX regulations (Sept 2004 on).

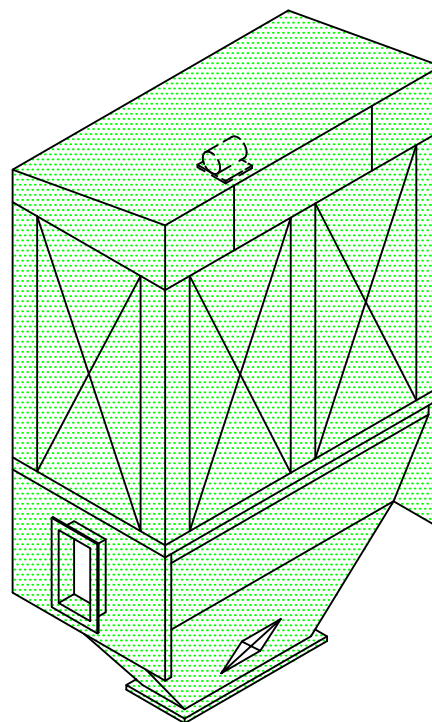
ALL PRICES EX. WORKS + V.A.T.

## H/2 RANGE

MODEL	TYPE	£
H/2/550/WP	Weatherproof	8752.00
H/2/710/WP	Weatherproof	9329.00

Prices ex works plus VAT

		RANGE	
		H/2/550	H/2/710
FILTER AREA	ft <sup>2</sup>	550	710
	m <sup>2</sup>	51	66
MAXIMUM CAPACITY	cfm	4400	5680
	cmh	7480	9790
LENGTH	mm	2440	2440
WIDTH	mm	1220	1220
HEIGHT (max)	mm	4320	4890
WEIGHT	kg	200	220



Cleaning motor 1 No. 0.35A/415V  
Hopper discharge to suit rotary valve  
Filter inlet port to suit fan selection

SPARES & CONSUMABLES		
Description	Pt No.	£exVAT
Filter sleeves 550	filterTF	32.00
Filter sleeves 710	filterJH	35.00
7" Wood disc	wood disc7	7.00
ATEX Panel	ATEX H	529.00

### DOUBLE MODULE WEATHERPROOF HOPPER FILTER

This range of filter units is designed for inside or outside use and permits a fan to be separately specified dependent on the required duty and filter speed. The unit is able to efficiently handle softwood, hardwood, MDF and sanding waste. The filter plant is normally positioned on steelwork such that waste can discharge through a rotary valve either under gravity into a skip or into a transfer system.

The taller filters on the H/2/710 model increase the filter area thus allowing greater extraction capacity for a given filter speed. Maximum capacities shown are based on a filter speed of 8 ft/min.

An AUTOMATIC SHAKING mechanism is fitted as standard and operates each time the fan is shut down. The filter sleeves are manufactured from the highest quality 350g polyester needlefelt.

The unit is largely constructed of galvanised sheet steel and is supplied in knockdown form for on site assembly.

Explosion vent area 0.53 m<sup>2</sup> compliant with ATEX regulations (Sept 2004 on).

ALL PRICES EX. WORKS + V.A.T.

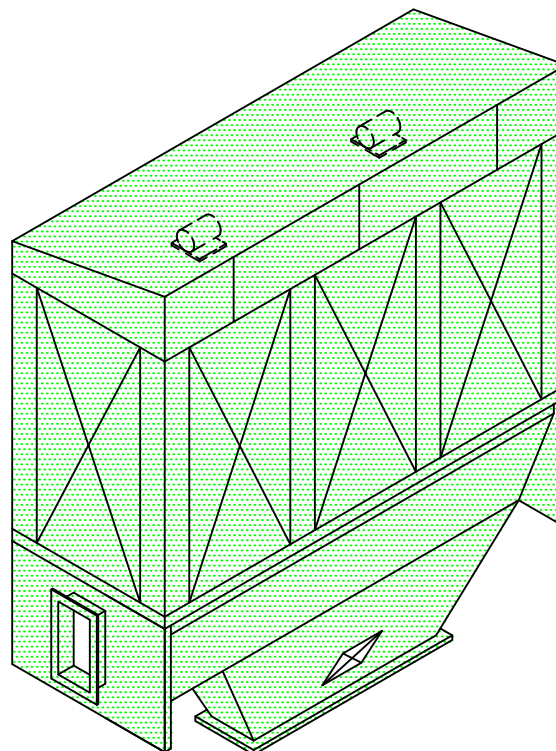


## H/3 RANGE

MODEL	TYPE	£
H/3/825/WP	Weatherproof	12668.00
H/3/1065/WP	Weatherproof	13535.00

Prices ex works plus VAT

		RANGE	
		H/3/825	H/3/1065
FILTER AREA	ft <sup>2</sup>	825	1065
	m <sup>2</sup>	76	99
MAXIMUM CAPACITY	cfm	6600	8520
	cmh	11220	14484
LENGTH	mm	3580	3580
WIDTH	mm	1220	1220
HEIGHT (max)	mm	4320	4890
WEIGHT	kg	300	330



SPARES & CONSUMABLES		
Description	Pt No.	£exVAT
Filter sleeves 825	filterTF	32.00
Filter sleeves 1065	filterJH	35.00
7" Wood disc	wood disc7	7.00
ATEX Panel	ATEX H	529.00

Cleaning motor 2 No. 0.35A/415V  
 Hopper discharge to suit rotary valve  
 Filter inlet port to suit fan selection

### TRIPLE MODULE WEATHERPROOF HOPPER FILTER

This range of filter units is designed for inside or outside use and permits a fan to be separately specified dependent on the required duty and filter speed. The unit is able to efficiently handle softwood, hardwood, MDF and sanding waste. The filter plant is normally positioned on steelwork such that waste can discharge through a rotary valve either under gravity into a skip or into a transfer system.

The taller filters on the H/3/1065 model increase the filter area thus allowing greater extraction capacity for a given filter speed. Maximum capacities shown are based on a filter speed of 8 ft/min.

An AUTOMATIC SHAKING mechanism is fitted as standard and operates each time the fan is shut down. The filter sleeves are manufactured from the highest quality 350g polyester needlefelt.

The unit is largely constructed of galvanised sheet steel and is supplied in knockdown form for on site assembly.

Explosion vent area 0.80 m<sup>2</sup> compliant with ATEX regulations (Sept 2004 on).

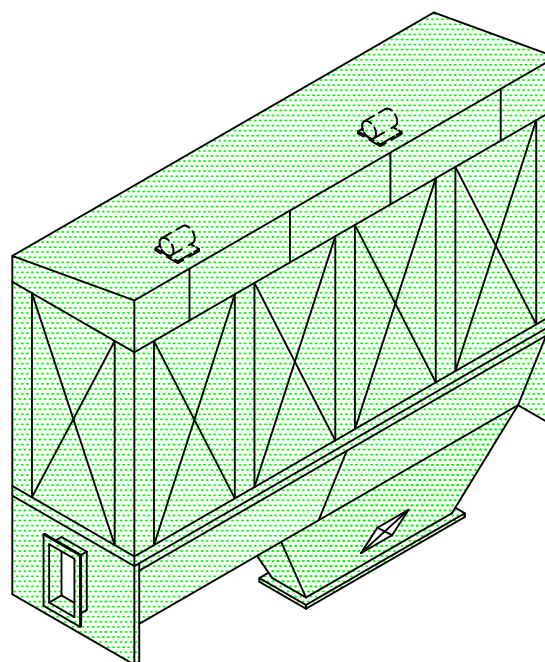
ALL PRICES EX. WORKS + V.A.T.

## H/4 RANGE

MODEL	TYPE	£
H/4/1100/WP	Weatherproof	16926.00
H/4/1420/WP	Weatherproof	18086.00

Prices ex works plus VAT

		RANGE	
		H/4/1100	H/4/1420
FILTER AREA	ft <sup>2</sup>	1100	1420
	m <sup>2</sup>	102	132
MAXIMUM CAPACITY	cfm	8800	11360
	cmh	14960	19312
LENGTH	mm	4880	4880
WIDTH	mm	1220	1220
HEIGHT (max)	mm	4320	4890
WEIGHT	kg	400	440



Cleaning motor 2 No. 0.35A/415V  
 Hopper discharge to suit rotary valve  
 Filter inlet port to suit fan selection

SPARES & CONSUMABLES		
Description	Pt No.	£exVAT
Filter sleeves 275	filterTF	32.00
Filter sleeves 355	filterJH	35.00
7" Wood disc	wooddisc7	7.00
ATEX Panel	ATEX H	529.00

### FOUR MODULE WEATHERPROOF HOPPER FILTER

This range of filter units is designed for inside or outside use and permits a fan to be separately specified dependent on the required duty and filter speed. The unit is able to efficiently handle softwood, hardwood, MDF and sanding waste. The filter plant is normally positioned on steelwork such that waste can discharge through a rotary valve either under gravity into a skip or into a transfer system.

The taller filters on the H/4/1420 model increase the filter area thus allowing greater extraction capacity for a given filter speed. Maximum capacities shown are based on a filter speed of 8 ft/min.

An AUTOMATIC SHAKING mechanism is fitted as standard and operates each time the fan is shut down. The filter sleeves are manufactured from the highest quality 350g polyester needlefelt.

The unit is largely constructed of galvanised sheet steel and is supplied in knockdown form for on site assembly.

Explosion vent area 1.07 m<sup>2</sup> compliant with ATEX regulations (Sept 2004 on).

ALL PRICES EX. WORKS + V.A.T.

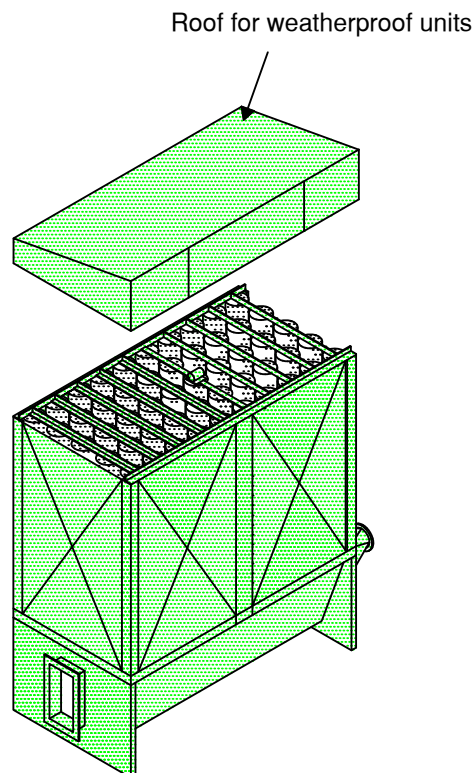
## TF/2 RANGE

MODEL	TYPE	£
TF/2/550/O	Open sided	5754.00
TF/2/550/CS	Closed sided	7214.00
TF/2/550/WP	Weatherproof	7791.00

TF/2/710/O	Open sided	6332.00
TF/2/710/CS	Closed sided	7791.00
TF/2/710/WP	Weatherproof	8369.00

Prices ex works plus VAT

		RANGE	
		TF/2/550	TF/2/710
FILTER AREA	ft <sup>2</sup>	550	710
	m <sup>2</sup>	51	32.9
MAXIMUM CAPACITY	cfm	5000	6455
	cmh	8500	10972
LENGTH	mm	2641	2641
WIDTH	mm	1220	1220
HEIGHT (max)	mm	2743	3243
WEIGHT	kg	2743	3243



Cleaning motor 1 No. 0.35A/415V  
 Transfer volume 1000 cfm (1700 cmh)  
 Filter inlet port to suit fan selection  
 Filter outlet port 180Ø

SPARES & CONSUMABLES		
Description	Pt No.	£exVAT
Filter sleeves 275	filterTF	32.00
Filter sleeves 355	filterJH	35.00
7" Wood disc	wooddisc7	7.00
ATEX Panel	ATEX TF	529.00

### DOUBLE MODULE THRUFLOW FILTER

This range of filter unit is designed for inside or outside use and permits a fan to be separately specified dependent on the required duty and filter speed. The unit is able to efficiently handle softwood, hardwood, MDF and sanding waste. The taller filters on the TF/2/710 models increase the filter area thus allowing greater extraction capacity for a given filter speed. Maximum capacities shown are based on a filter speed of 8 ft/min.

An AUTOMATIC SHAKING mechanism is fitted as standard and operates each time the fan is shut down. The filter sleeves are manufactured from the highest quality 350g polyester needlefelt.

The unit is largely constructed of galvanised sheet steel and is supplied in knockdown form for on site assembly.

Explosion vent area 0.53 m<sup>2</sup> compliant with ATEX regulations (Sept 2004 on).

ALL PRICES EX. WORKS + V.A.T.

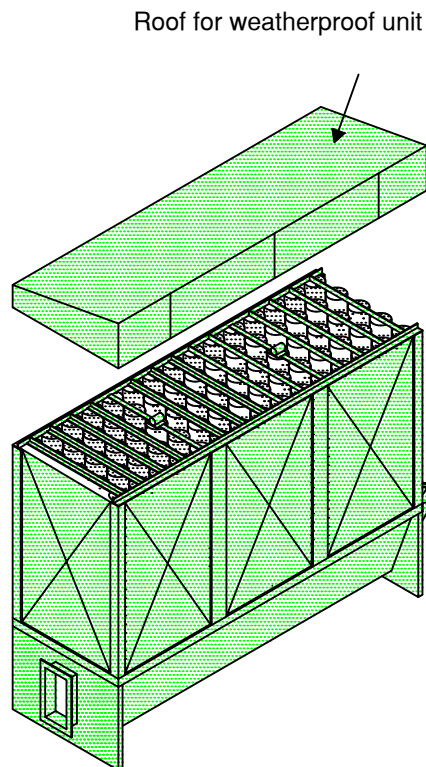
## TF/3 RANGE

MODEL	TYPE	£
TF/3/825/0	Open sided	8421.00
TF/3/825/CS	Closed sided	10458.00
TF/3/825/WP	Weatherproof	11225.00

TF/3/1065/O	Open sided	9287.00
TF/3/1065/CS	Closed sided	11319.00
TF/3/1065/WP	Weatherproof	12091.00

Prices ex works plus VAT

		RANGE	
		TF/3/825	TF/3/1065
FILTER AREA	ft <sup>2</sup>	825	1065
	m <sup>2</sup>	76	32.9
MAXIMUM CAPACITY	cfm	7000	9036
	cmh	11900	15362
LENGTH	mm	3785	3785
WIDTH	mm	1220	1220
HEIGHT (max)	mm	2743	3243
WEIGHT	kg	180	200



Cleaning motor 2 No. 0.35A/415V  
 Transfer volume 1400 cfm (2380 cmh)  
 Filter inlet port to suit fan selection  
 Filter outlet port 225Ø

SPARES & CONSUMABLES		
Description	Pt No.	£exVAT
Filter sleeves 825	filterTF	32.00
Filter sleeves 1065	filterJH	35.00
7" Wood disc	wood disc7	7.00
ATEX Panel	ATEX TF	529.00

### TRIPLE MODULE THRUFLOW FILTER

This range of filter units is designed for inside or outside use and permits a fan to be separately specified dependent on the required duty and filter speed. The unit is able to efficiently handle softwood, hardwood, MDF and sanding waste. The taller filters on the TF/3/1065 models increase the filter area thus allowing greater extraction capacity for a given filter speed. Maximum capacities shown are based on a filter speed of 8 ft/min.

An AUTOMATIC SHAKING mechanism is fitted as standard and operates each time the fan is shut down. The filter sleeves are manufactured from the highest quality 350g polyester needlefelt.

The unit is largely constructed of galvanised sheet steel and is supplied in knockdown form for on site assembly.

Explosion vent area 0.80 m<sup>2</sup> compliant with ATEX regulations (Sept 2004 on).

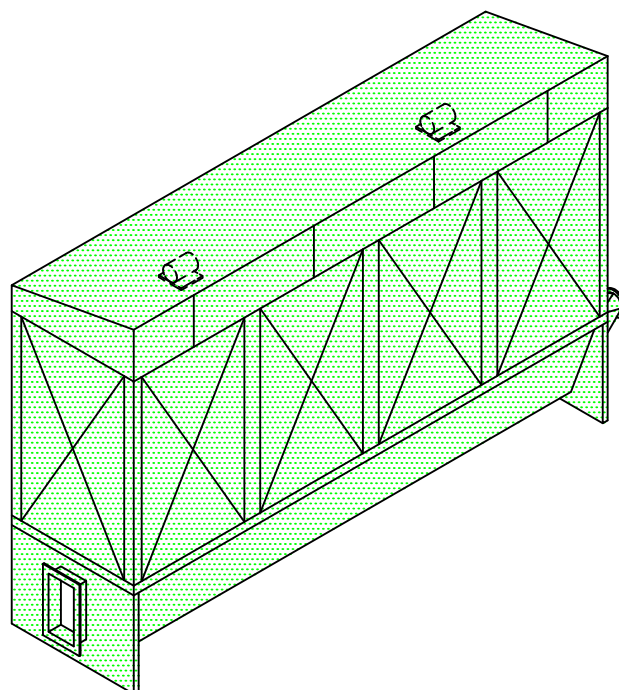
ALL PRICES EX. WORKS + V.A.T.

## TF/4 RANGE

MODEL	TYPE	£
TF/4/1100/O	Open sided	11120.00
TF/4/1100/CS	Closed sided	14039.00
TF/4/1100/WP	Weatherproof	15005.00

TF/4/1420/O	Open sided	12254.00
TF/4/1420/CS	Closed sided	15194.00
TF/4/1420/WP	Weatherproof	16154.00

Prices ex works plus VAT



Cleaning motor 2 No. 0.35A/415V  
Transfer volume 2000 cfm (3400 cmh)  
Filter inlet port to suit fan selection  
Filter outlet port 250Ø

		RANGE	
		TF/4/1100	TF/4/1420
FILTER AREA	ft <sup>2</sup>	1100	1420
	m <sup>2</sup>	102	132
MAXIMUM CAPACITY	cfm	10000	12909
	cmh	17000	21945
LENGTH	mm	4928	4928
WIDTH	mm	1220	1220
HEIGHT (max)	mm	2743	3243
WEIGHT	kg	360	400

SPARES & CONSUMABLES		
Description	Pt No.	£exVAT
Filter sleeves 275	filterTF	32.00
Filter sleeves 355	filterJH	35.00
7" Wood disc	wooddisc7	7.00
ATEX Panel	ATEX TF	529.00

### FOUR MODULE THRUFLOW FILTER

This range of filter units is designed for inside or outside use and permits a fan to be separately specified dependent on the required duty and filter speed. The unit is able to efficiently handle softwood, hardwood, MDF and sanding waste. The taller filters on the TF/4/1420 models increase the filter area thus allowing greater extraction capacity for a given filter speed. Maximum capacities shown are based on a filter speed of 8 ft/min.

An AUTOMATIC SHAKING mechanism is fitted as standard and operates each time the fan is shut down. The filter sleeves are manufactured from the highest quality 350g polyester needlefelt.

The unit is largely constructed of galvanised sheet steel and is supplied in knockdown form for on site assembly.

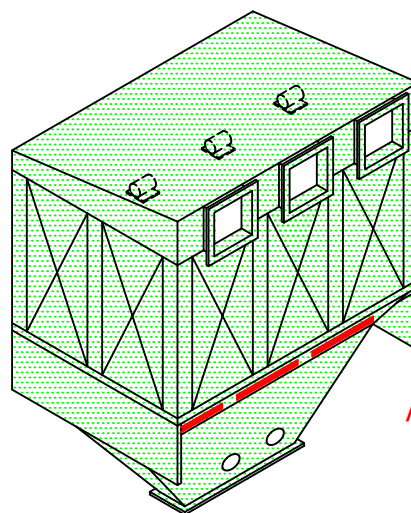
Explosion vent area 1.07 m<sup>2</sup> compliant with ATEX regulations (Sept 2004 on).

ALL PRICES EX. WORKS + V.A.T.

## JH RANGE

MODEL	TYPE	£
JH/2/1420/WP	Weatherproof	16926.00
JH/3/2130/WP	Weatherproof	23688.00
JH/4/2840/WP	Weatherproof	30466.00
JH/5/3550/WP	Weatherproof	37506.00

Prices ex works plus VAT



ATEX Vents

		RANGE			
		JH/2	JH/3	JH/4	JH/5
FILTER AREA	ft <sup>2</sup>	1420	2130	2840	3550
	m <sup>2</sup>	132	198	264	330
MAXIMUM CAPACITY	cfm	11360	17040	22720	28400
	cmh	19312	28968	38624	48280
LENGTH	mm	2387	3530	4673	5816
WIDTH	mm	2362	2362	2362	2362
HEIGHT (max)	mm	5461	5461	5461	5461
WEIGHT	kg	400	600	800	1000

SPARES & CONSUMABLES		
Description	Pt No.	£exVAT
Filter sleeves 355	filterJH	35.00
7" Wood disc	wooddisc7	7.00
ATEX Panel	ATEX JH	529.00

## JUMBO HOPPER FILTER RANGE

This range of filter unit is designed for outside use and permits a fan to be separately specified dependent on the required duty and filter speed. The unit is able to efficiently handle softwood, hardwood, MDF and sanding waste. The filter plant is normally positioned on steelwork such that waste can discharge through a rotary valve either under gravity into a skip or into a transfer system.

Maximum capacities shown are based on a filter speed of 8 ft/min.

An AUTOMATIC SHAKING mechanism is fitted as standard and operates each time the fan is shut down. The filter sleeves are manufactured from the highest quality 350g polyester needlefelt.

The unit is largely constructed of galvanised sheet steel and is supplied in knockdown form for on site assembly.

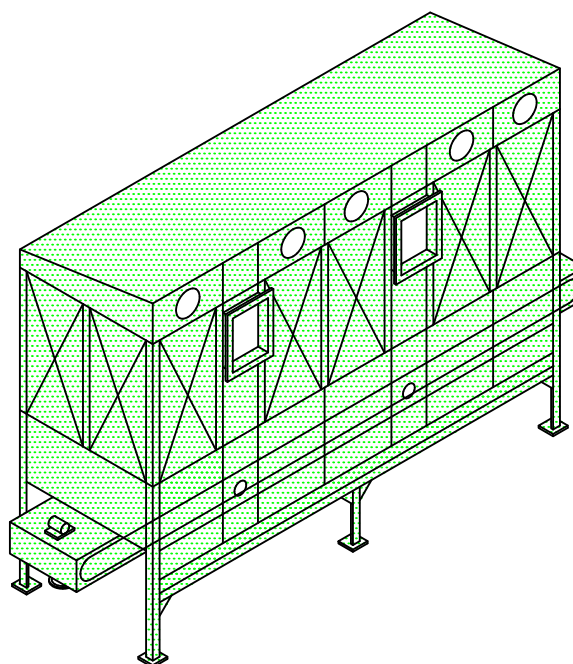
Explosion vent area compliant with ATEX regulations (Sept 2004 on).

ALL PRICES EX. WORKS + V.A.T.

## CH RANGE

Example illustration of CH/5/2  
Five section, two inlet plenums

SPARES & CONSUMABLES		
Description	Pt No.	£exVAT
Filter sleeves 355	filterJH	35.00
7" Wood disc	wooddisc7	7.00
ATEX Panel	ATEX CH	529.00



MODEL	FILTER AREA		VOLUME		LENGTH mm	WIDTH mm	HEIGHT mm	WEIGHT kg	PRICE £
	ft <sup>2</sup>	m <sup>2</sup>	cfm	cmh					
CH/2/1	1270	118	10160	17272	3927	2362	6096	700	24617.00
CH/3/1	1905	177	15240	25908	5070	2362	6096	900	32309.00
CH/4/1	2540	236	20320	34544	6213	2362	6096	1100	41538.00
CH/5/2	3175	295	25400	43180	7927	2362	6096	1450	52112.00
CH/6/2	3810	354	30480	51816	9070	2362	6096	1650	60769.00
CH/7/3	4445	413	35560	60452	10784	2362	6096	2000	70754.00
CH/8/3	5080	472	40640	69088	11927	2362	6096	2200	79832.00
CH/9/4	5715	531	45720	77724	13641	2362	6096	2500	90557.00
CH/10/4	6350	590	50800	86360	14784	2362	6096	2700	99220.00
CH/11/4	6985	649	55880	94996	15927	2362	6096	2900	107877.00
CH/12/4	7620	707	60960	103632	17070	2362	6096	3100	115345.00

### CHAINFILTER RANGE

This range of filter unit is designed for outside use and where relatively large air volumes are required. Filtered waste drops to the base of the unit where a chain-driven conveyor drags it to a rotary valve for onward transfer to a container or burner. Automatic filter cleaning is normally provided by regeneration fans.

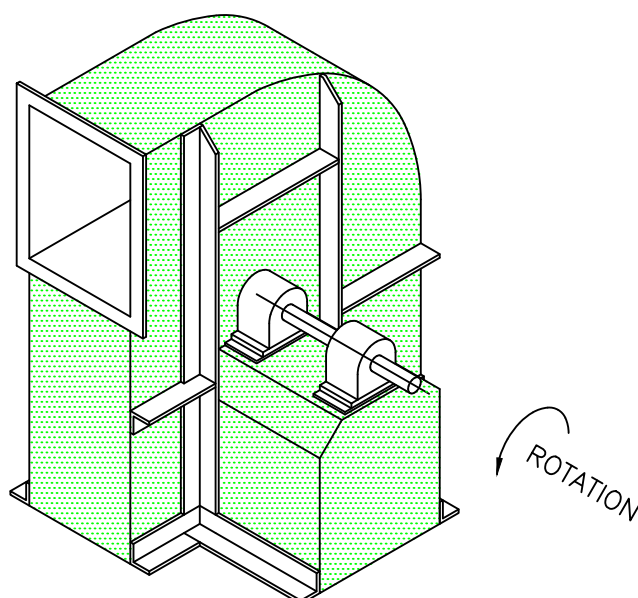
An electrical control panel is normally required for the sequential start up and shutdown of the main suction fan(s), rotary valve, chain drive and regeneration fans.

Prices exclude main fan, control panel, rotary valve and supporting steelwork all of which are separately specified.

Explosion venting compliant with ATEX regulations (Sept 2004 on).

ALL PRICES EX. WORKS + V.A.T.

## FANS



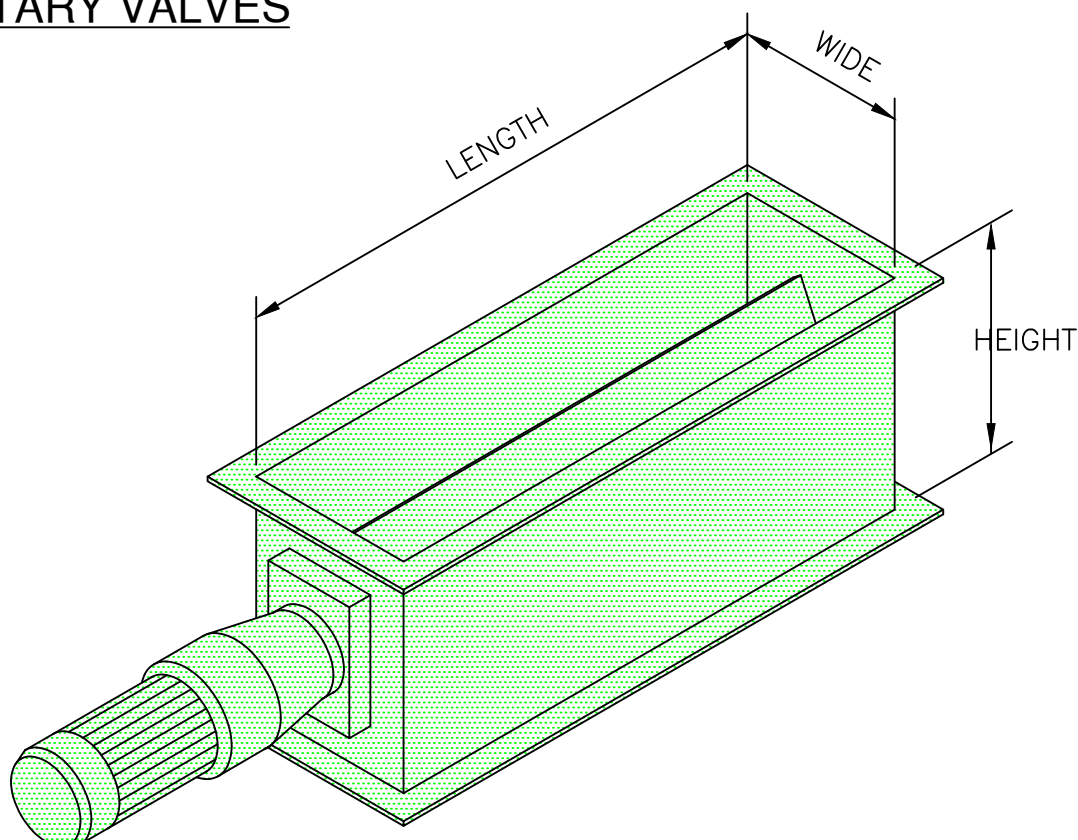
MODEL	POWER		RPM	VOLUME		DRIVE	WEIGHT	STATIC	PRICE
	HP	kW		cfm	cmh				
FAN12DC1.5HP	1.5	1.1	2800	800	1360	DIRECT	40	1375	1145.00
FAN12DC3HP	3.0	2.2	2800	1000	1700	DIRECT	50	1250	1187.00
FAN13.5DC3HP	3.0	2.2	2800	1200	2040	DIRECT	55	1500	1381.00
FAN13.5DC4HP	4.0	3.0	2800	1500	2550	DIRECT	60	1375	1486.00
FAN15DC5.5HP	5.5	4.0	2800	2500	4250	DIRECT	80	1500	1906.00
FAN16.5DC10HP	10.0	7.5	2800	3250	5525	DIRECT	120	1750	2258.00
FAN18DC15HP	15.0	11.0	2800	4000	6800	DIRECT	180	2250	3171.00
FAN21BD20HP	20.0	15.0	2800	4000	6800	V BELT	300	2500	6227.00
FAN27DC15HP	15.0	11.0	1400	5000	8500	DIRECT	250	1625	3591.00
FAN30BD20HP	20.0	15.0	1400	7000	11900	V BELT	450	2000	7691.00
FAN30DC20HP	20.0	15.0	1400	7000	11900	DIRECT	300	2000	3927.00
FAN30DC25HP	25.0	18.5	1400	7500	12750	DIRECT	320	2000	4221.00
FAN33DC30HP	30.0	22.0	1400	8500	14450	DIRECT	400	2375	4814.00
FAN33DC40HP	40.0	30.0	1400	10000	17000	DIRECT	450	2400	5807.00
FAN36BD30HP	30.0	22.0	1400	10000	17000	V BELT	600	2250	7886.00
FAN36BD40HP	40.0	30.0	1400	12000	20400	V BELT	700	2375	8132.00
FAN36DC50HP	50.0	38.0	1400	12500	21250	DIRECT	700	2400	9881.00
FAN36DC60HP	60.0	45.0	1400	14000	23800	DIRECT	750	2500	11025.00
FAN42BD75HP	75.0	55.0	1400	15000	25500	V BELT	1000	3500	13860.00

We manufacture our own centrifugal fans and impellers from heavy gauge mild steel plate.

Electrical starters / control panels are excluded from the above prices as they are separately specified. All motors are 3 phase and wired for direct on line starting (up to 5.5HP) or star delta (10HP and above).



## ROTARY VALVES

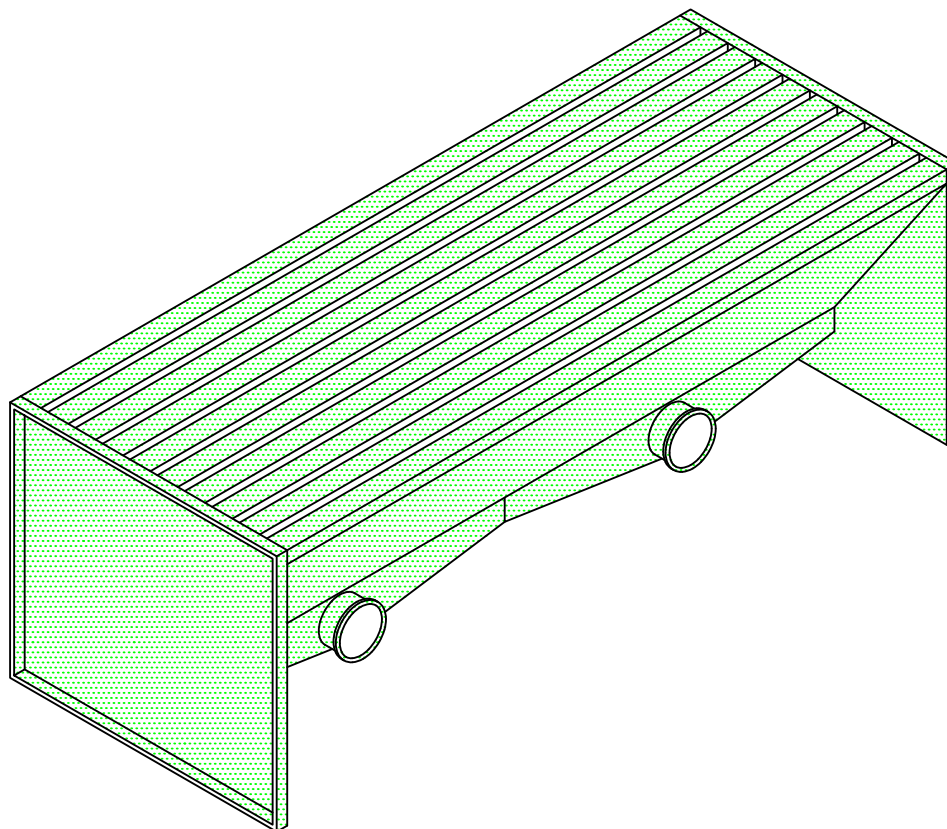


MODEL	POWER		RPM	L x W x H mm	WEIGHT kg	PRICE £
	HP	kW				
RV0.5	0.75	0.55	20	500 x 300 x 450	90	2678.00
RV0.75	0.75	0.55	20	750 x 300 x 450	105	2861.00
RV1.0	0.75	0.55	20	1000 x 300 x 450	120	3071.00
RV1.5	0.75	0.55	20	1500 x 300 x 450	140	3817.00
RV2.0	0.75	0.55	20	2000 x 300 x 450	160	5129.00
RVJ0.5	1.5	1.1	22	500 x 500 x 620	125	3208.00
RVJ0.75	1.5	1.1	22	750 x 500 x 620	150	3434.00
RVJ1.0	1.5	1.1	22	1000 x 500 x 620	175	3686.00

We manufacture our own rotary valves from heavy gauge mild steel plate. We use 45 mm dia shafts and resilient shot-blasted rubber tipped blades.

A rotary valve is usually attached to the bottom of a discharge hopper on a filter plant and allows woodwaste to be deposited into a container or silo at approximately atmospheric pressure. A pair of matching flanges are supplied to facilitate fixing to attendant plant items. An oil filled reduction geared motor drives the rubber tipped valve blades slowly to ensure continuous flow of material through the casing. Motors are wound for 415V 3PH 50HZ supply.

## DOWNDRAUGHT BENCH



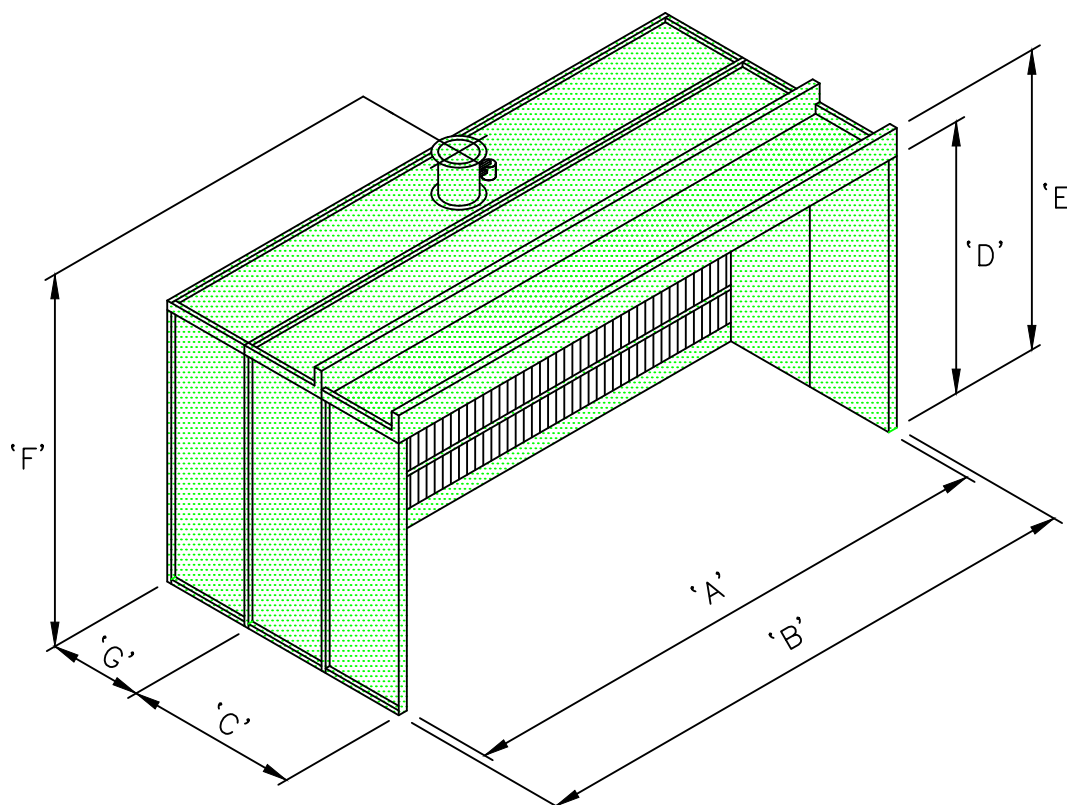
MODEL	AIR REQUIRED		LENGTH	WIDTH	HEIGHT	PRICE
	cfm	cmh	mm	mm	mm	£
DD1	1200	2040	1190	900	800	966.00
DD2	2400	4080	2380	900	800	1927.00

Downdraught benches provide a solution to the problems of airborne dust arising from hand sanding and finishing operations. Work is conducted on the bench top while a downdraught is created from the bottom of the bench. The bench requires a separately specified suction fan and means of waste filtration.

We supply a range of fan and filter units to operate in conjunction with our downdraught benches, the size of which will depend on the number and size of bench to be served. The bench(es) may be connected to an existing extraction plant of suitable capacity. Each bench section is equipped with a low level duct connection port measuring 180mm in diameter and lipped for clip jointing. The table top metal slats can be covered in felt or timber by the end user to provide product protection and to concentrate suction on the work area.

Tables of non-standard size can be manufactured if required.

## DRYBACK FILTER SPRAYBOOTHS



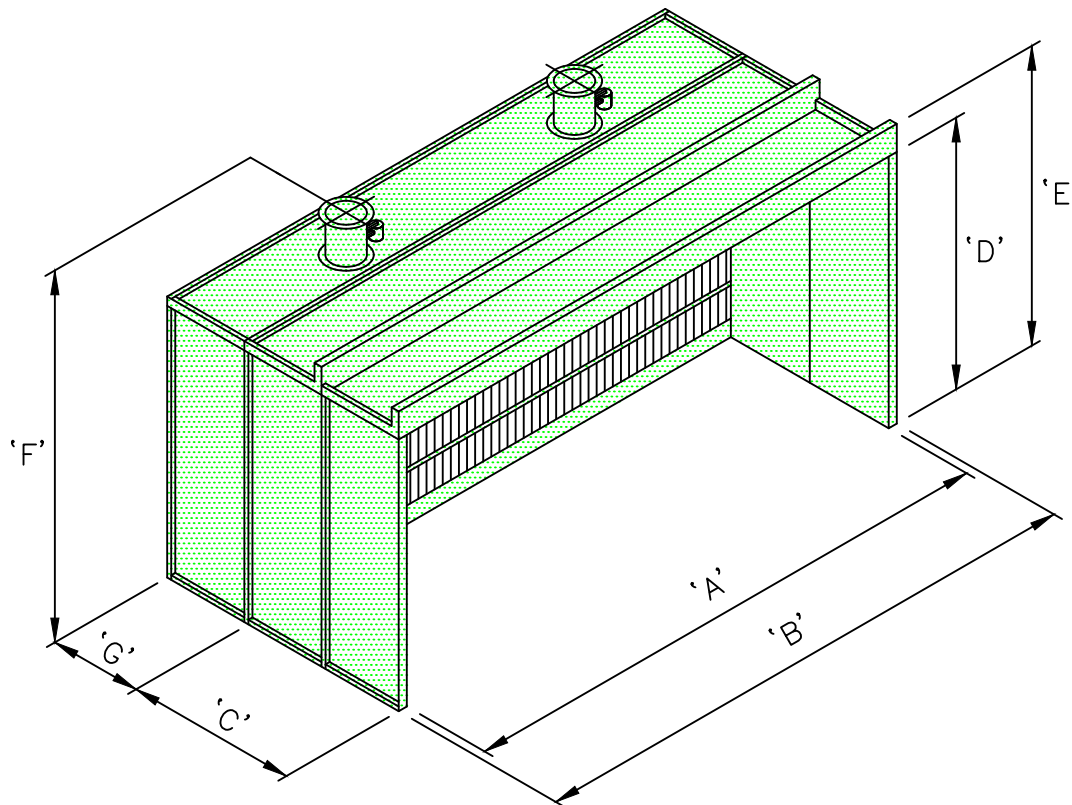
MODEL	'A'	'B'	'C'	'D'	'E'	'F'	'G'	PRICE £
DFB150	1524	1624	1524	2286	2489	2768	813	3806.00
DFB225	2286	2386	1524	2286	2489	2896	813	4431.00
DFB300	3048	3148	1524	2286	2489	2896	813	4641.00
DFB375	3810	3910	1524	2286	2489	2896	813	5339.00

### FAN DATA

MODEL	ID	PCD	OD	kW	m <sup>3</sup> /hr	CFM	FANS
DFB150	500	545	580	2.2	9400	5500	1
DFB225	600	645	680	3.0	13500	8200	1
DFB300	630	675	710	3.0	18500	11000	1
DFB375	680	725	760	4.0	23000	13600	1

All dimensions are nominal and may be subject to change  
 Motors can be supplied flameproof at extra cost.  
 Price includes fan starter(s).

## DRYBACK FILTER SPRAYBOOTHS



MODEL	'A'	'B'	'C'	'D'	'E'	'F'	'G'	PRICE £
DFB450	4572	4672	1524	2286	2489	2896	813	6668.00
DFB525	5334	5434	1524	2286	2489	2896	813	8012.00
DFB600	6096	7096	1524	2286	2489	2896	813	9434.00
DFB675	6858	6958	1524	2286	2489	2896	813	10190.00

### FAN DATA

MODEL	ID	PCD	OD	kW	m <sup>3</sup> /hr	CFM	FANS
DFB450	600	645	680	1.5	27500	16400	2
DFB525	600	645	680	2.2	32000	19000	2
DFB600	630	675	710	3.0	37000	22000	2
DFB675	680	725	760	4.0	41500	24500	2

All dimensions are nominal and may be subject to change  
 Motors can be supplied flameproof at extra cost.  
 Price includes fan starter(s).

Prices ex works plus VAT.

SEPTEMBER 2023

# The Woodwork Dust Control Co Ltd

Rushbeds Industrial Estate, Wotton Road, Brill, Bucks, HP18 9UB.  
 Tel: 01844 238833 Email: enquiries@woodworkdustcontrol.co.uk  
 Fax: 01844 238899 Web: www.woodworkdustcontrol.co.uk

## A Complete Wood Waste Extraction Service to All Timber Industries

### SERVICE TARIFF – SEPTEMBER 2023

The latest Health and Safety COSHH Regulations (Control of Substances Hazardous to Health) impose more stringent requirements on LEV (Local Exhaust Ventilation) systems and higher standards of testing and reporting. We can provide a complete service in this regard as detailed below.

#### Plant Service

This is an annual inspection to check all moving elements of the plant, filter condition, ductwork integrity, machine hood condition, slide damper operation, electrical loads, fluid levels where appropriate, seal and joint condition - taking corrective action as necessary. Refit all parts and re-seal with mastic, including materials and labour. Recommend remedial work if appropriate.

#### Plant Service with COSHH/LEV Report

It is a requirement of the COSHH Regulations for those responsible for any wood dust extraction equipment to make a written assessment of the risks to health associated with wood dust, together with any action needed to prevent or control those risks. Regulations state that those responsible must service the equipment and provide a LEV report at least every 14 months.

Our procedure is to take static and dynamic pressure readings on all branches of the ductwork system and interpret these readings to produce air speed and volume data which is later incorporated into a written report compliant with the COSHH Regulations.

#### Dust Test with Indicative WEL Report

Hardwood dust and mixed wood dust have been assigned maximum workplace exposure limits (WEL) of 3 mg/m<sup>3</sup> (8-hour time-weighted average) under the COSHH Regulations. If required by your risk assessment we can undertake this indicative test and produce a written report. Softwood 5 mg/m<sup>3</sup> (8-hour time-weighted average)

CHARGES FOR SINGLE LEV SYSTEMS	NO. OF WOODWORKING MACHINES		
	1 – 10	11 - 20	21 – 30
	<b>3 YEAR AUTOMATIC RENEWAL / ONE OFF PRICE</b>		
Plant Service ( £ )	789 (263 p y) / 276	882 (294 p y) / 308	993 (331 p y) / 348
Plant Service with COSHH/LEV report ( £ )	1338 (446 p y) / 468	1608 (536 p y) / 563	1782 (594 p y) / 624
Dust Test with WEL Report ( £ )	1338 (446 p y) / 468	1608 (536 p y) / 563	1782 (594 p y) / 624
Plant Service + COSHH/LEV + WEL reports ( £ )	1860 (620 p y) / 651	2124 (708 p y) / 743	2301 (767 p y) / 805

CHARGES FOR MULTIPLE LEV SYSTEMS	NO. OF LEV SYSTEMS		
	2	3	4
	<b>3 YEAR AUTOMATIC RENEWAL / ONE OFF PRICE</b>		
Plant Service ( £ )	1308 (436 p y) / 458	1653 (551 p y) / 579	1827 (609 p y) / 639
Plant Service with COSHH/LEV report ( £ )	1860 (620 p y) / 651	2205 (735 p y) / 772	2379 (793 p y) / 833
Dust Test with Indicative WEL Report ( £ )	1860 (620 p y) / 651	2205 (735 p y) / 772	2379 (793 p y) / 833
Plant Service + COSHH/LEV + WEL reports ( £ )	2379 (793 p y) / 833	2724 (908 p y) / 953	2898 (966 p y) / 1014

Prices apply to sites within 150 miles of our works. For more distant sites, or sites with 5 or more LEV systems, please ask us to provide a tailored quote. All prices exclude VAT.

# Standard Conditions of Trading

1. (a) The quotation is open to acceptance for 30 days for U.K. Contracts. A Contract shall exist only upon our written acceptance of the Customer's order.
  - (b) The acceptance of our quotation includes acceptance of the following conditions which shall be subject to and governed in all respects by English law.
  - (c) Unless otherwise agreed by us in writing the following terms and conditions shall apply to all orders placed with us. Any stipulations or conditions in our Customer's order form which would conflict with any of these terms and conditions or in any way qualify or negate the same shall be deemed to be inapplicable to any order placed with us unless expressly agreed to by us in writing when acknowledging the order.
  2. Orders may only be cancelled or suspended with our written consent and then only on terms which indemnify us against all loss.
  3. Statements in any quotation or Contract made by us as to the time or date for despatch of goods or materials or for completion of our work or otherwise for the performance of our Contract are an estimate based on current trading conditions. We can accept no responsibility if we are delayed or prevented from despatching goods or materials or otherwise performing our Contract by any causes beyond our control including Act of God, force majeure, war or hostilities, legislation, Government Order or direction, any strike, lock-out, labour disturbance, civil commotion, fire, accident, breakdown of machinery or any lack or shortage of labour or material or any reduction or stoppage of output at the works of makers of any goods or materials required and in any such case we are to be released from any obligation to complete our Contract by a particular time, but without prejudice to our right to recover payment for goods or materials already delivered or work already done. For the purposes of this condition, circumstances not caused by us shall be deemed to be beyond our control.
  4. The quoted despatch period or time for completion is dependent on our being in possession of full and final instructions. If approval of drawings by the Customer is required and such approval or necessary amendment is not notified to the Company within 7 days of the submission of any drawing then the delivery period or time for completion shall be extended by and equivalent period in excess of 7 days. In the event that amendments are made by the Customer which necessitate revision and further approval of any drawings then until such revision and further approval shall have been made and obtained we shall not be deemed to be in possession of full and final instructions.
  5. (a) We are not to be liable for any consequential loss or damage caused or arising by reason of any delays in completing work ordered from us by reason of late despatch of or any fault, failure or defect in any goods or materials supplied or fixed by us or in any work done by us or by reason or any such goods or materials not being of the type of quality ordered or by reason of any other matter whatsoever. All reasonable expenses incurred by us by reason of the suspension of the Contract by the Customer or by reason of our being prevented from or delayed in proceeding with the Contract by the Customer or some other contractor employed by him shall be added to the Contract price.
  - (b) We shall not be liable for any claim whether brought against the Customer or against us either under any Statute or at Common Law by any person arising from any cause other than our negligence or that of our employees and the Customer shall indemnify us against any such claim and the costs of any legal proceedings.
  6. (a) Where we are responsible for transport at an extra charge in the U.K., we reserve the right to deliver by road or rail at current road or rail rates and subject to the prevailing standard terms and conditions relating to the carriage of merchandise or any statutory modification thereof. Unless otherwise agreed we shall not be responsible for off-loading.
  - (b) In the event of goods or materials failing to reach their destination the Customer must inform us of the fact in writing within 10 days of the date of despatch of the goods or materials by road or within 20 days of the date of despatch by rail as notified to our Customers by us, otherwise we cannot be responsible for any claim in respect thereof. If our Customer wishes to claim that there is any shortage on delivery in respect of goods or materials supplied by us or that the same have been damaged in transit or that any goods or materials supplied by us are defective or not in accordance with the Contract he must note it on the delivery ticket at the time of delivery and also give notice to us and (in the case of any shortage or damage) to any Railway or other carrier by whom the goods were delivered within three days after the day of delivery of the same. If the Customer fails to note his complaint on the delivery ticket or to give such notice the goods or materials shall be deemed to have been delivered and to be in accordance with the Contract in all respects and the Customer shall be responsible for all subsequent loss or damage.
  7. Risk passes to the Customer on delivery at the Customer's address or agreed site if we are responsible for delivery, or ex works on handing over to the Customer's carrier.
  8. (a) In lieu of any expressed or implied statutory or other warranties, guarantees, conditions or liabilities (whether as to fitness, quality, standard of workmanship or otherwise) which are hereby excluded, the following provisions shall apply:- The Customer shall not be entitled to rescind this Contract or to claim damages on the grounds of any statement made by us or our agents (other than the express terms of the Contract) relative to the plant machinery or goods or any part thereof and having reference to capacity, output, performance, efficiency or suitability for any particular purpose.
  - (b) Items of our manufacture returned carriage paid to our works within six months from the date of despatch and which subject to proper use and maintenance shall upon examination be proved to our satisfaction to have been defective will be repaired or replaced and delivered U.K. free of charge, exclusive of fitting costs.
  - (c) All proprietary parts and materials, including any items of plant and machinery specified by us, are subject to the manufacturer's conditions of sale and guarantee.
  9. We reserve the right to refuse to execute any order or Contract if the arrangements for payment or the Customer's credit are not satisfactory to us, in the case of nonpayment of any account when due or in the case of death, incapacity, bankruptcy or insolvency of the Customer or when the Customer is a Limited Company in the case of liquidation or the appointment of a Receiver then the price of all goods and materials delivered by us to the Customer to date and any sums due or payable to us from the Customer on any other account shall immediately become due and payable from the Customer to us and in addition we are to have the right to cancel every Contract made with the Customer or to cancel or suspend or continue delivery of goods and materials and/or the execution of work at our option without prejudice to our right to recover any loss sustained.
  10. Unless otherwise agreed by us in writing all special tests and inspections required by the Customer or his agent shall be carried out at our works at the expense of the Customer. When any goods have been passed as satisfactory by the Customer's representative, the same shall be deemed to comply with our obligations under the Contract in all respects and any claim thereafter that the goods are defective or unsatisfactory in any respect cannot be made or recognized.
  11. When goods are ready for despatch, but despatch is delayed with our consent at the Customer's or his agent's request, payment shall become due as if despatch had been effected when the goods were so ready, and the goods will be stored at the risk and expense of the Customer.
  12. We reserve the right to make an extra charge if we are required to supply goods or materials in consignments smaller than those stated in our estimate, unless otherwise stated in our quotation. When we quote to supply any quantity of a particular product or article our price is based on the assumption that the same will all be identical. If we are subsequently required to make individual variations or alterations in the dimensions or design of particular items of such product, or article or alterations or variations in connection with the fixing of the same an extra charge will be made any indulgence granted by us to a Customer or any waiver by us of our right under these conditions in respect of any particular transaction or series of transactions shall not be deemed to be a waiver of our rights in respect of any further transactions nor, to be an agreement to confer the same indulgence in respect of any further transactions.
  13. (a) Any drawings or technical documents intended for use in the construction of the equipment or of part thereof and submitted to the Customer prior or subsequent to the formation of the Contract remain our exclusive property. They may not, without our consent, be utilized by the Customer or copied, reproduced, transmitted or communicated to a third party.
  - (b) No responsibility is accepted for any drawing, design or specification not prepared by us and submission of this tender does not constitute any warranty, guarantee, representation or opinion of the practicability of construction or of the efficacy, safety or otherwise of the materials supplied or work to be executed by us in accordance therewith and any additional work caused by defects or error in any such drawings, designs or specifications shall be chargeable as an extra. Unless expressly stated, drawings submitted with this tender shall not be binding as to detail. We reserve the right in our absolute discretion to amend or vary any specification whether the same be prepared by the Customer or by ourselves provided that such amendment or variation shall not prejudice the efficiency of the installation or quality of the goods to be supplied or work to be done.
  14. In the event that we shall be required to appoint subcontractors nominated by the Customer, the Customer hereby appoints us as its agent for all purposes including the terms of the engagement of the sub-contractors and the conduct of the work thereunder. The Customer hereby confirms that we, acting as agent of the Customer, as aforesaid, shall in no way be personally liable in respect of any breach of Contract caused by the default of the sub-contractors and the Customer hereby agrees to indemnify us against any claims made against us in respect of such breach or default by the sub-contractors.
  15. When we are employed to install our equipment the following conditions shall apply to our estimate and any Contract made by us.
    - (a) Our Customer is to do and provide everything requisite to enable our programme of work to be carried out in the sequence planned by us without interruption and that we are to be provided free of charge with the following further facilities when required, unless otherwise agreed:
      - (i) A clear site wherever practicable or adequate working space.
      - (ii) All scaffolding, ladders, trestle boards, hoisting tackle, crane hire and fork lifts and equipment needed for our work which is to be erected, dismantled and re-erected by the Customer complete ready for use as and when required.
      - (iii) Watching and adequate protection of our work, materials, equipment, tools and other property.
      - (iv) Artificial lighting and all power services.
      - (v) All facilities on the site required to comply with the Building (Safety Health and Welfare) Regulations 1948 and every statutory or duly authorized modification or reenactment thereof for the time being in force.
      - (vi) In the case of lump sum supervisory installation/ commissioning Contracts, the requisite labour as provided in our quotation.
  - In the event of the foregoing facilities not being specified an extra charge will be made to the Customer. Under no circumstances will we accept any liability for hire charges in respect of equipment of any kind.
  - (b)(i) Unless otherwise agreed our price does not include for any building work, cutting away, making good or for any concrete work or grouting.
  - (ii) The price quoted does not include for any costs involved in linking the Customer's supply of all or any services (i.e. electricity wiring, gas, compressed air) to connection points on our equipment so as to enable the equipment to become operational.
  - (c) Our materials when delivered to the site are to be unloaded and stacked under suitable cover by the Customer's men without charge to us at suitable and convenient places and levels for our operatives. The Customer is to be responsible for the safety of our materials on the site and maintaining the same in such satisfactory condition to enable us to proceed with the Contract.
  - (d) If special visits to the site have to be made to install an uneconomic number of items or if time is lost while our men are compelled to wait on the site to commence or continue their work, we reserve the right to make an extra charge.
  - (e) Where the Customer requires us to carry our sitework which is additional to the Contract or where site conditions at the time or site conditions which were not previously made known to us make it necessary for us to carry out work which is additional to the Contract then the price or prices for such work will be additional to the Contract price and will be invoiced accordingly.
  - (f) Where we undertake to erect on foundations and fixings prepared by the Customer or other sub-contractor we shall not be responsible for the correct setting out of the foundations and fixings and the Customer must satisfy himself on this issue prior to the commencement of erection. Any extra work incurred through the incorrectness of foundations and fixings will be chargeable to the Customer.
  - (g) Our employees are instructed to exercise due care in doing their work, but the Customer must be responsible for screening or covering anything likely to be accidentally damaged by our work.
  - (h) Our insurance cover is restricted to damage or injury to the Customer's property or employees caused by our employees or the employees of our sub-contractors (other than nominated sub-contractors referred to in clause 15).
16. Acceptance of this tender constitutes a warranty and representation by the Customer that he has complied with every applicable Statute Order in Council Regulation or Direction By-Law or other lawful requirement or instruction whether of the Government or of any local or other lawful authority and in particular that he has lawfully obtained every necessary licence, permit or authority that may be required in connection with the work and that all goods works or installations agreed to be supplied or caused one shall comply in all respects with the Factories Acts.
17. The following terms of payment shall apply unless the same have been varied as stated in the tender. Payment during the progress of the work shall be made at the rate of 90% of the value of materials delivered on the site (whether fixed or unfixd) and of the value of the work executed such payment to be made within fourteen days of application and if such payment is not made then we may suspend or abandon the work and remove unfixd materials, tools and other equipment from the site. A further 5% shall be paid when the installation or parts thereof shall be notified as ready for beneficial use and the balance one month thereafter.
18. Title of each item of the equipment shall remain vested in the Company until full payment for same has been received by the Company. For the avoidance of doubt property in the equipment or any part thereof shall not pass to the Customer or to any other party merely by virtue of their becoming affixed to the real or personal property of the Customer or such other person. Pending full payment therefore the Customer shall:
  - (a) Not remove the Company's label or mark of ownership from any of the equipment.
  - (b) Not alter any of equipment in any way.
  - (c) Keep the equipment fully insured against all usual risks at the Customers expense.
19. All machines will be finish-painted to our standard colour and all plant steelwork will be painted with a coat of good primer before leaving our works. Any re-painting or touching up after the equipment left our works shall be for the Customer's account.
20. Owing to the uncertainty of requirements in respect of guarding and other protective equipment, attention is drawn to the guards and protective equipment as specified herein. No warranty is made that such guards or equipment are sufficient to comply with regulations now or at any time hereafter in force. The cost of supplying additional guards or protective equipment shall be in addition to the present quotation price.
21. If we are employed as Sub-contractors for a Main Contractor and if under the Main Contract the Employer of the Main Contractor keeps back retention money attributable to our Sub-Contract Works, the interest of the Main Contractor in such retention money shall be fiduciary as Trustee for us until such time as our account has been paid in full.
22. In place of any other conditions or warranties whether imposed by Statute or implied by Common Law, we undertake as follows: We will repair or, if necessary, replace free of charge any materials or work found to be defective if the defect is due to faulty manufacture or bad workmanship and is brought to our attention within six months of the completion of the work.
23. (a) The above conditions shall apply not only to this tender (if accepted) but to all orders subsequently placed with us or on behalf of the same Customer in connection with the same work unless otherwise agreed in writing.
- (b) Discounts - All quotations are strictly nett and do not provide for any discounts and are exclusive of V.A.T. or any other like fiscal imposition.
24. It is emphasized that goods retained for longer than fourteen days shall be deemed to have been accepted by the purchaser and the Company will not take them back or make any type of credit or refund.